

Chapter 732



June 19 Meeting

Drake Field, Fayetteville

1:00 Potluck

2:00 Meeting

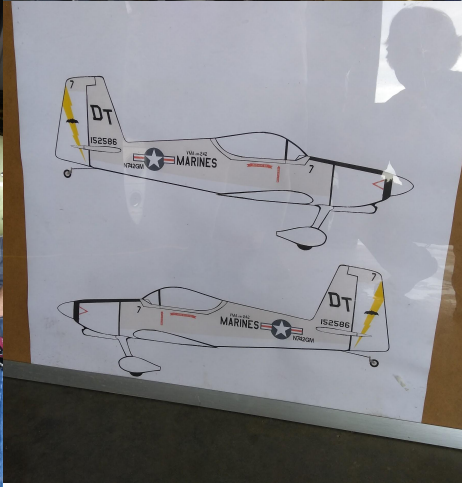
Send newsletter items to: ea732newsletter@gmail.com

**Congratulations
Randy Resh!**



Finally PPL single engine land rated 5/19/2022.

EAA Chapter 732 May Gathering



A Message
from our
Chapter
President
Rick McKinney

We've had to move our meeting to the terminal at Drake Field. Berryville terminal is full of voting machines which was not fully known was going to happen.

I'll be bringing BBQ chicken & pork from Penguin Ed's and some buns for the entree. Please bring a side dish.

We'll eat at 1:00 and meet at 2:00.

See you at the airport.

EAA Chapter 732 - Treasurer's Report, May 2022

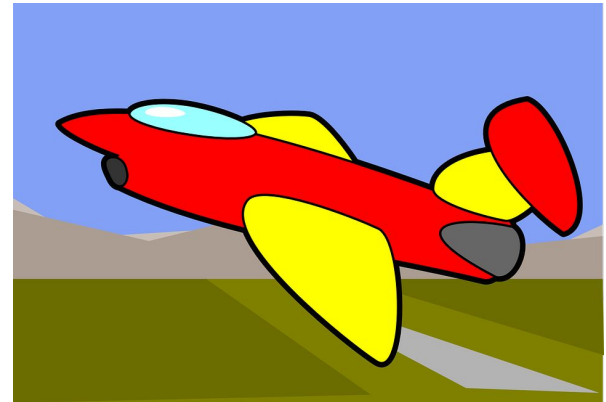
Period: 05/11/2022 – 06/13/2022

Previous Balance: \$1,718.15
Deposits: \$ 40.00
Withdrawals: \$ 177.66
Current Balance: \$1,580.49

Chapter Dues
Food & supplies for chapter meal

Members who have paid their 2022 chapter dues: 36

Randy Doughty
EAA Chapter 732, Treasurer





1961 PA-22/20-108. Converted to tailwheel with Scott Tailwheel, sealed struts, 5556 TT, 444.5 SMOH, 118.6 hrs on #3 and 36.8 hrs on #2 cylinders since being replaced on Lycoming O-235 C1 108 HP/115 HP Takeoff Power All cylinders are 80/77 or better.

King KLX 135A Radio/GPS, King KT-78 transponder and Garmin GDL-82 ADS-B out

Cleveland Disc Brakes with Chrome Disc. Good tires, fabric and paint. Stits Cub Yellow paint and fabric. New vacuum pump.

Asking \$34,950.00 or best offer. Need to sell, as I'm moving out of Arkansas and I've sold my Rogers, AR KROG Hanger.

Great Tailwheel aircraft to cruise around at 90kts burning 7GPH or less.

Contact: Mike Griffith

Bonanzafk@sbcglobal.net

479/287-2909. Leave Message.





June 23 - 26 - Kansas City, MO- Lee's Summit Municipal Airport (KLXT) The next USPA Flyout will be to Kansas City and includes a Wings Seminar, a hangar cookout hosted by the local EAA chapter and tours of the Steamboat Arabia, TWA and WWI Museums. If you are looking for an excuse to fly your plane, hang out with other pilots and enjoy some group rate discounts, join us in Kansas City. Discounted room rates are limited and must be reserved by June 8, so book early if you are interested in going. The first year of USPA membership is free (and subsequent years only \$20, anyway). For more information, see <https://www.uspilots.org/flyouts/upcoming-trips/202206-kansascity>

June 24 -June 25 Bryant, AR - Saline County Airport (KSUZ) Wings over Bryant Airshow. The Friday show will be an afternoon/night show. Show begins at 6:30 pm. Show time for Saturday will be 1:00. The airport will close to transient aircraft one hour before Showtime. Lots of world-class Airshow acts including the AeroShell Team, Melissa Burns Edge 540, P-51 Acro in QuickSilver plus other Warbirds, Les Shockley's twin jet powered fire truck, the Pitts Raptor, Provost Jet demo, Bulldogs Formation Team, Skydivers and more. Admission is \$20 and kids 12 and under are free. Lots of vendors and a great kids area.

June 25 - North Little Rock, AR - North Little Rock Municipal Airport (KORK) EAA Chapter 165 4th Saturday Breakfast. *** Cancelled EAA Chapter 165 monthly breakfast at North Little Rock Airport on June 24th is cancelled. This is due to all of our breakfast workers being needed to operate our plane train kiddie ride at the BRYANT AIR SHOW on June 24th and 25th, Friday and Saturday. ****. Any questions - 419 360-7414

June 25 - Shell Knob, MO - Turkey Mountain Airport (MO00) from 8 am - 12 pm... Judy's famous "Omelet in a Bag" breakfast fly-in. By donation. For additional information call: Judy at 417-858-6345; Cell 417-671-1832 This event will be in the Restaurant building. Park in the south parking area and a shuttle will pick you up ** Note CTAF 122.9

June 25 - Berryville, AR - Carroll County Airport (4M1) Fly-in Burger and Hot Dog lunch with all the fixings ..\$.00 suggested donation. All starting at ??:???. Contact: 870-423-8393 or 870-423-7854.

June 25 - Collinsville, OK - Sandridge Airpark (OK94) 11am-2pm Burger Bash contact ken 918-855-2381.

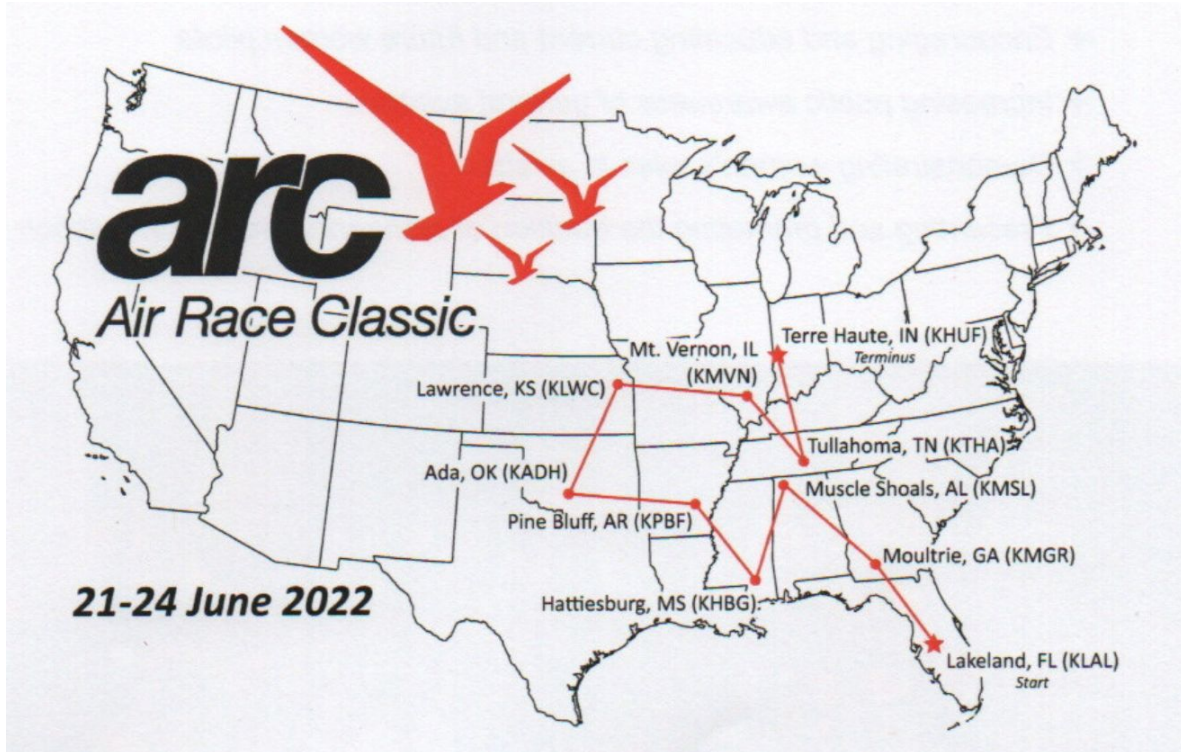


July 2 - Springdale, AR (KASG) Now has a CFI doing a free ground school on the 1st Saturday of the month from 9-12. Flightline Bar & Grill located in the Springdale terminal building serves pancakes all day. Contact 479-318-2523 or email info@flightlinebar.com for information.

July 2 - Morrilton, AR - Morrilton Municipal Airport (KBDQ) 9:00 AM until all food is gone. Full Breakfast with Petit Jean Sausage & Bacon. Sponsored by EAA 1590. EAA Meeting will follow breakfast. This will be a recurring event on the first Saturday of the month. Contact: 501-472-1197

July 25 - 31 Oshkosh, WI - Whitman Field (KOSH) EAA AirVenture 2022

Don't Miss the fun: Pine Bluff ARC Stop



AIR RACE CLASSIC 2022 FACT SHEET

What is the Air Race Classic?

The Air Race Classic is an all-women, cross-country airplane race that traces its roots to the 1929 Women's Air Derby, aka the Powder Puff Derby. This is the 45th Annual Air Race Classic.

When is this year's ARC?

Teams depart at 8 a.m. Tuesday, June 21 from Lakeland, Florida and must arrive in Terre Haute, Indiana by 5 p.m. Friday, June 24.

Who flies the Air Race Classic?

Women pilots of all ages and from all walks of life, competing on teams of two or three. This year, racers range in age from 17 to veteran pilots in their 90s.

How many teams and pilots are flying the ARC this year?

This year's field consists of 50 teams, with 115 racers from 35 states, 18 teams represent colleges or universities. There are two teams with multi-generational members from the same family racing together.

What is this year's course?

This year's race covers 2,548 miles across 12 states.

Where are the Start, Terminus and intermediate stops?

This year's ARC starts at Lakeland, Florida and ends at Terre Haute, Indiana. Intermediate stops are in Moultrie, GA, Muscle Shoals, AL, Hattiesburg, MS, Pine Bluff, AR, Ada, OK, Lawrence, KS, Mount Vernon, IL, and Tullahoma, TN.

How many colleges are competing this year?

19 colleges or universities are fielding teams:

Purdue University, Southern Illinois University-Carbondale, Polk State College, Western Michigan University, Auburn University, Northwestern Michigan College, Central Florida Aerospace Academy, Liberty University, Kansas State University Polytechnic, Ohio State University, Indiana State University, Kent State University, LeTourneau University, Southeastern Oklahoma State University, University of North Dakota, Embry-Riddle Aeronautical University-PreScott, California Aeronautical University.

How does the ARC work?

Each race plane receives a unique handicap. The team that beats its handicap by the largest margin, less any penalties, wins. This enables faster and slower planes to compete on an equal footing. At each stop, teams do a flyby over a timing line, with timers on the ground and electronic trackers recording their elapsed time between stops. ARC's scorers calculate each team's times at the end of the race and determine the winners.

How long does flying the ARC take?

That depends on airplane speed, pilot strategy, and weather. The fastest planes can complete the course in two days. Slower planes may need all four days and may not finish until just before the arrival deadline.

What are the pilot qualifications?

Pilots and co-pilots must have at least 100 hours as pilot-in-command to qualify for the race. In addition, one of them must have at least 500 hours as pilot-in-command or a current instrument rating. They may bring a teammate who must hold at least a student pilot certificate.

What types of airplanes can compete in the ARC?

Race planes must have non-turbocharged and non-supercharged piston engines between 100 and 600 horsepower, rated for continuous operation at maximum engine speed. Jets are not allowed.

Can ARC racers fly at night?

No. The ARC is flown during daylight hours in visual flight conditions.

Where do the racers stay overnight?

Racers may stay overnight at any of the stops. Depending on their airplane, teams may fly a timing line and keep going, or they may land to refuel before taking off for the next stop. Most teams decide toward the end of the day whether to stay where they are or try to make one more stop before nightfall.

How do racers prepare for the ARC?

Safety is a primary focus of the ARC. Racers must take online aviation safety courses at home and attend in person briefings at the Start, discussing terrain, weather, airspace, flight rules, engine and performance management, air race operations, and flyby procedures. Racers spend months studying the route and preparing their airplanes.

How can the public meet the racers?

Some events at the Start and Terminus are open to the public - see the ARC web site, www.airraceclassic.org. Airplane enthusiasts can come to any of the stops to watch racers fly the timing line and maybe meet them on the ground. At each stop, volunteers help the racers with water, food, fuel, transportation - whatever they need. In addition, racers may participate in youth education programs at the Start and Terminus.

How can I follow the racers?

You can follow the racers on Air Race Classic social media pages: Facebook (Air Race Classic, Inc.), Instagram (@airraceclassic), and Twitter (@authenticarc). Teams are encouraged to share their experiences on their own blogs, websites, or social media and tag the Air Race Classic to share with followers.

Important Notice about Trigger Gap

Trigger Gap Airfield (17A) Located due south of Carroll County Airport (4M1) has new noise abatement procedures.

Among other things RWY 10 is Right Traffic and RWY 28 is Left Traffic.

Refer to the RAF Airfield Guide. www.airfield.guide

EAA T-shirts and Patch for Sale



\$10



\$5

EXCELLENCE

Paul Howard Poberezny

ΠΑΥΛ ΗΩΜΑΡΔ ΠΟΒΕΡΕΖΝΥ

“EAA stands for family, high standards and cleanliness.”

Send your newsletter items to:
eea732newsletter@gmail.com

