

A 2014 aerial view showed no trace remaining of Victory Airport.

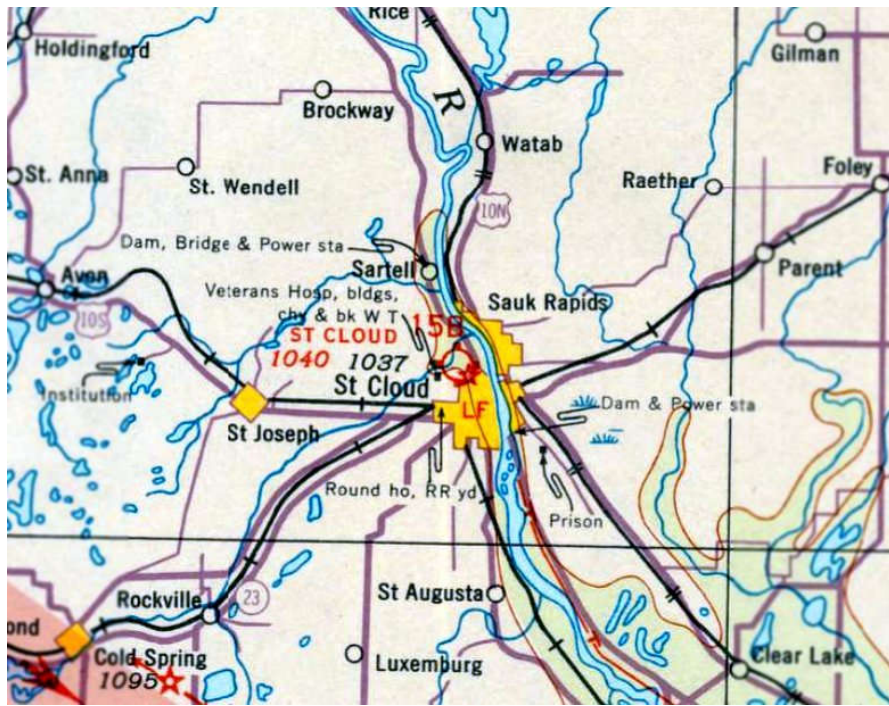
The site of Victory Airport is located north of the intersection of Brookdale Drive & Queen Avenue.

---

St Cloud Airport / Whitney Memorial Airport, St. Cloud, MN

45.58, -94.183 (Northwest of Minneapolis, MN)





St Cloud Airport, as depicted on the June 1935 Twin Cities Sectional Chart.

No airfield in St. Cloud was yet depicted on the November 1934 Twin Cities Sectional Chart.

The earliest depiction which has been located of St. Cloud Airport was on the June 1935 Twin Cities Sectional Chart.

It depicted St. Cloud Airport as a commercial/municipal airport.



The "New Whitney Memorial Airport" was dedicated on 6/29/35, as commemorated on a postmark (courtesy of Dallam Oliver-Lee).

The Airport Directory Company's 1938 Airport Directory (courtesy of Chris Kennedy) described Whitney Memorial Airport as having a 3,320' x 2,574' rectangular sod field.

Ken Chirhart recalled, "Whitney Memorial... My father worked with the WPA in the 1930s to construct the granite walls near the airfield entrance."

According to John Evans, "The Whitneys were a very wealthy family that owned a lot of Northern States Power Company & gave the land for use as an airport."

According to the [St. Cloud Hospital](#), the airport had a revolving beacon light marking the airport, but this disturbed the sleep of patients in the nearby hospital, so the city & the hospital agreed to move the beacon to the roof of the hospital.

This allowed the patients to sleep in peace and gave the beacon light a wider range since the hospital was the highest structure near the airport.

John Evans recalled, "The beacon for the Whitney Field was on top of the nearby St. Cloud Hospital.

We lived directly across the Mississippi River from the hospital.

The beacon was a constant in my life each night.

I would fall asleep with the reassuring soft green & white light coming through my bedroom window."



The earliest photo which has been located of Whitney Memorial Airport was [a 1938 aerial photo \(from the MN DNR, courtesy of Chris Kennedy\)](#). The most elaborate part of the airfield's infrastructure seemed to be its entrance road.



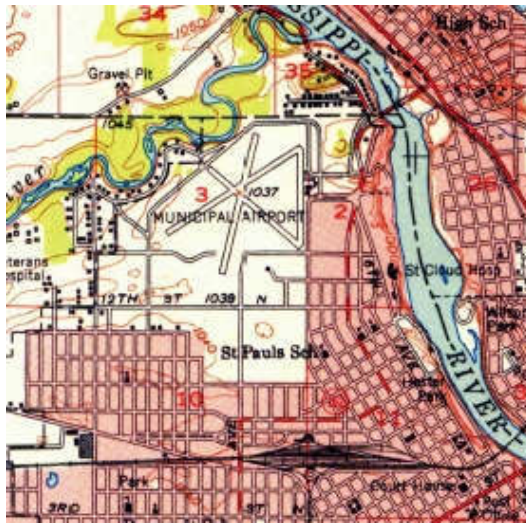
A 1940 aerial view by Leo Moore of Whitney Memorial Airport (from the [Minnesota History Center](#), courtesy of Barry Kazmer), showing a Ferris wheel & merry-go-round next to several aircraft.



A 10/16/49 aerial photo (courtesy of Dallam Oliver-Lee) appeared to show 3 paved runways under construction at Whitney Memorial Airport.

Three single-engine aircraft were visible parked south of the cluster of hangars on the east side.



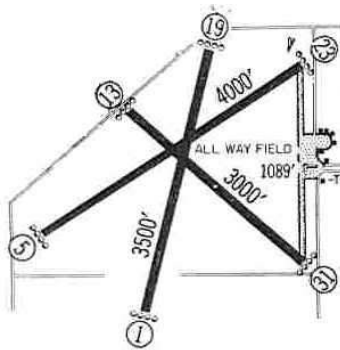


The 1950 USGS topo map (courtesy of Dallam Oliver-Lee) depicted the “Municipal Airport” as having 3 paved runways.

Ken Chirhart recalled, “While still in high school in 1957 I soloed in a J-3 Cub at Whitney.

Later, when I was a member of the St. Cloud State College Flying Club,

I earned my private license in an Aeronca 7AC at the field.”

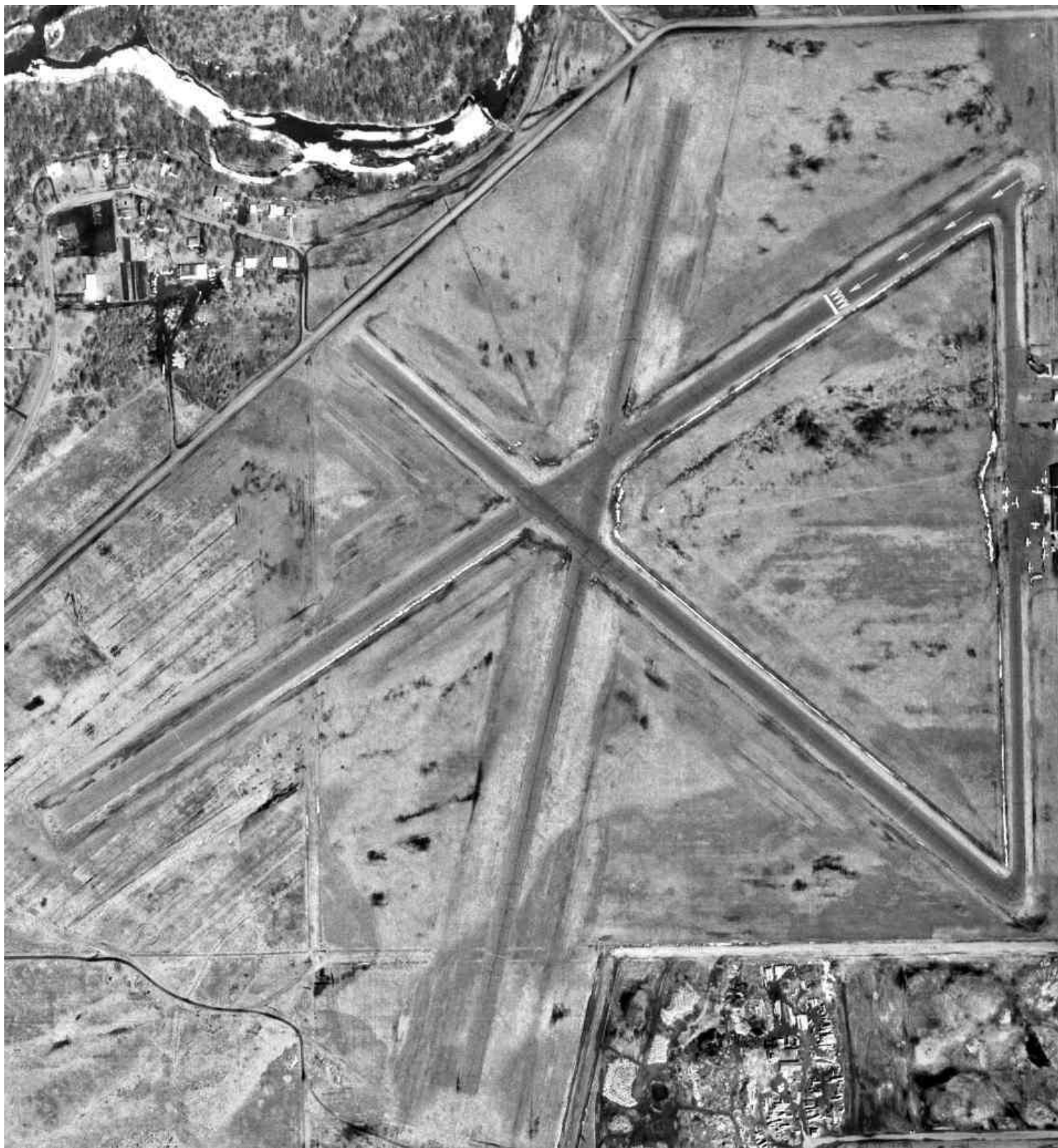


The 1960 Jeppesen Airway Manual (courtesy of Chris Kennedy) depicted Whitney Memorial Airport as having 3 paved runways, with the 4,000' Runway 5/23 being the longest.

Taxiways led to a ramp on the east side of the field with several buildings arranged in a semicircle.

The 1962 AOPA Airport Directory described Whitney Memorial Airport as having 3 bituminous runways: 4,300' Runway 5/23, 3,500' Runway 1/19, and 3,000' Runway 13/31.

The airport had hangars & offered charter services. The operator was listed as St. Cloud Flying Service, Inc.



A 4/4/64 aerial photo (courtesy of Dallam Oliver-Lee) showed 9 light aircraft parked south of the cluster of hangars on the east side.





The last aeronautical chart depiction which has been located of Whitney Memorial Airport was on the May 1969 Twin Cities Sectional Chart (courtesy of Alex Hauzer). It depicted Whitney Memorial as having 3 paved runways, with the longest being 4,000'.



The last photo which has been located showing Whitney Memorial Airport still in operation was a 1969 aerial view looking northwest by Vincent Mar (from the [Minnesota History Center](#), courtesy of Barry Kazmer). It depicted dozens of light aircraft parked adjacent to several hangars.

The new St. Cloud Municipal Airport opened in 1970 at a site 3 miles east of the city, at which point Whitney Memorial Airport apparently closed.



A 1973 aerial photo (courtesy of Dallam Oliver-Lee) showed the majority of the length of the runways still remained, but baseball fields were being built over the airport site.

The former airport beacon atop the hospital wasn't actually removed until 1979, when it was relocated to Aitkin (94 miles northeast of St. Cloud).

The site of Whitney Memorial Airport was labeled [Whitney Park](#) on the 1984 & 1993 USGS topo maps.



In the 1991 USGS aerial photo, a 2,500' portion of the former Runway 13/31 was still visible, on either side of Northway Drive, which was built over it.

The remaining runway portion southeast of Northway Drive was still marked with a closed runway "X".

A shorter portion of the former Runway 5/34 also still existed.

Matt Haas reported on the status of the site in 2003: "Parts of the runway are still there, plus a brick wall that was the gate to the airport.

Now it's mostly soccer & baseball fields, all of the hangars & buildings are now home to Whitney Senior Center."



A circa 2007 aerial view looking west at the remains of 3 runways at the site of Whitney Airport.



A circa 2007 aerial view looking east at 2 former hangars at the site of Whitney Airport.





A July 2008 photo looking northeast at a former hangar on the east side of the Whitney Airport site.



A 5/16/11 aerial photo (courtesy of Dallam Oliver-Lee) showed that portions of 3 runways still remained as the site of Whitney Memorial Airport.





An August 2012 photo looking west at a former hangar on the east side of the Whitney Airport site.



A 2013 photo of the former entrance gate to Whitney Memorial Airport, which remains in the middle of Northway Drive.

The site of Whitney Airport is located at the intersection of Northway Drive & Stockinger Drive.

Thanks to Matt Haas for pointing out Whitney Airport.

---

University of Minnesota Airport, Blaine, MN

45.12, -93.185 (Northeast of Minneapolis, MN)