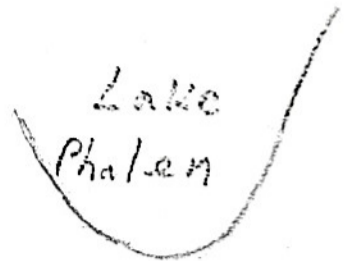


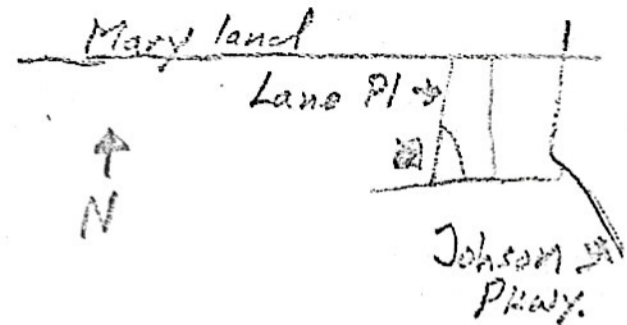
Chapter 54 Newsletter

Speed Holman Chapter
St Paul, Minnesota
June 1969

President
Gil Leiter
774 7214



JUNE MEETING - We will meet June 9 at Gil Leiter's home at 1137 Lane Pl. Gill has a Stit's Playmate under construction, and being that it's all in pieces at this time it should be most interesting to study. Meeting time as always 7:30



IOWA FLY-IN Chapter 75 in Davenport Iowa will be having a fly-in June 28-29. Races, aerobatics, and flight contests will be featured. Camping areas as well as motels will be available.

MAY MEETING- We voted to increase dues to \$5.00 per year, payable on an annual basis January 1. Dues for the last half of 1969 are due in June (\$2.50). Bring your EAA membership card and the back will be stamped to show that you are a member of 54. Gus Limbach needs volunteers for the safety committee at Rockford this summer, so if you plan to attend. . . . Guss also needs white plastic bottles, they will be filled with water and used to mark off areas at the Fly-in.

The Geenie's Teenie being built by the class at Highland park will be put in storage for the summer. The boys who have graduated have formed a club to finish the plane next fall. Kent VanMeter reported that the boys couldn't see turning the project over to another class.

HOPKINS AMPHIBIAN - The Volmer Sportsman started by the Hopkins high school last fall is now complete and will fly any day now. Loyd Frankie, pilot with Northwest and a Sportsman owner himself will do the test flying. The aircraft has a C-90 and is slightly under design weight at 980 lbs. Loyd recently completed modifications to the rudder on his Sportsman to correct a bad yawing tendency. The rudder area was increased and the section made thicker. Thickening a control surface makes it more effective. It is good to remember that control surfaces should be as thick or thicker than what they are attached to.

BLOOMER FLY-IN - Was a great success again this year with many homebuilts in attendance. Understand that Gus was doing pretty things with a Cassut while Forest Lovely was grinding valves on his Modle A powered Pete.

PHIL PETRIK -has completed the design of an all wood, low wing, cantilever monoplane. When he returns next fall to enter the Uof M engineering school we may be able to twist his arm and get a presentation for a program.