



June 2019 Newsletter Volume 43, Number 06

# The Static Line

Leroy Castle Memorial EAA Chapter 538 Phoenix, AZ

Website: [www.538.eaachapter.org](http://www.538.eaachapter.org)

Email: [ea538board@gmail.com](mailto:ea538board@gmail.com)

Facebook: [www.facebook.com/ea538](http://www.facebook.com/ea538)



Monthly meeting are the second Tuesdays of every month starting 6:30 P.M. at Deer Valley airport restaurant.

### IN THIS ISSUE

Calendar of Events & Index	pg. 1
Officers & Directors	pg. 1
Presidents Report	pg. 2
Secretary Report	pg. 3
Notices, Sport Aviation, Wallpaper	pg. 4
For Sale	pg. 5-8
More Notices	pg. 9-10
Airport of the Month	pg. 11-16
Webinars for June	pg. 17
AirVenture 2019 Info-Tickets	pg. 18-19
Young Eagles - ACE academy	pg. 20

### 2019 CALENDAR

Monthly Meeting (MM)	
June 11, 2019	MM
Presentation by FAA to Dee Grimm	
July 9, 2019	MM
August 13, 2019	MM
September 10, 2019	MM
October 8, 2019	MM
November 12, 2019	MM
December 10, 2019	Christmas Party

### 2019 CHAPTER OFFICERS / DIRECTORS

President – Carlos Hernandez  
 Email: [pazmany.ch@gmail.com](mailto:pazmany.ch@gmail.com)  
 Ph: (623) 810-5675

Vice President – Darren Henley  
 Email: [p51bldr@yahoo.com](mailto:p51bldr@yahoo.com)

Treasurer – John Gregg  
 Email: [jgregg.jr@gmail.com](mailto:jgregg.jr@gmail.com)

Secretary – Alexander Bodak III  
 Email: [cpucoach@yahoo.com](mailto:cpucoach@yahoo.com)

1 year Director – Dave Biddle  
 Email: [dbiddle3@cox.net](mailto:dbiddle3@cox.net)

2 year Director – Tom Velvick  
 Email: [tomvelvick@cox.net](mailto:tomvelvick@cox.net)

3 year Director - Katie Velvick  
 Email: [rv4chick@cox.net](mailto:rv4chick@cox.net)

Newsletter Editor – Alex Bodak  
 Email: [cpucoach@yahoo.com](mailto:cpucoach@yahoo.com)

Webmaster – Alex Bodak  
 Email: [ea538board@gmail.com](mailto:ea538board@gmail.com)

## ***PRESIDENT'S REPORT***

**June 2019** Hello everyone!

Last month's presentation of "Building Electric Airplanes" by Micah Martin was very interesting. I brought to light some facts about using electric power vs conventional combustion engines. A ton of information is available. The drive that Micah has to achieve this is inspiring on the homebuilt home front! Good luck to you Micah in your efforts of developing a suitable alternative electric aircraft engine!

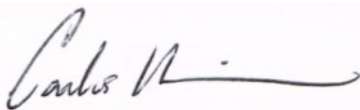
This month's presenter is Tina Buskrik with the FAA. ***Our presentation for the meeting will be a special one.*** One of our own members has been nominated, selected and awarded the Wright Brothers Master Pilot Award. This award is the most prestigious award the FAA issues to pilots. If you are not aware of this award, it is presented by the FAA to recognize individuals who have exhibited professionalism, skill, and aviation expertise for ***at least 50 years*** as "Master Pilots." The award will be presented at the meeting. Congratulations Derwin E. Grimm Jr. (Dee) on this monumental achievement!

We hosted our last Young Eagle rally of the 2018-2019 school year this past Saturday. It again was a pleasure to work with the Archer-Ragsdale Arizona Chapter of the Tuskegee Airmen and ACE Academy. We had a good show of about 25 young eagles and about the same in parents! Among the highlight of the Young Eagle rally, Larry "Jet" Jackson, coordinator with the Archer-Ragsdale Arizona Chapter of the Tuskegee Airmen presented EAA Chapter 538 with a check in a donation amount of \$500. Thank you "Jet" and the Archer-Ragsdale Arizona Chapter for your support of EAA Chapter 538's Young Eagle program! We have the same mission and that is to educate and inspire as many young adults as we can! Along with you, we want to show them there are many options available to them in aviation!

A special mention of appreciation goes to our Young Eagle Event Coordinator, Cheri McGunagle. Without her tireless efforts, endless energy and positive outlook in all these kids a lot of this may not be possible! Thank you Cheri!

I look forward to seeing YOU on Tuesday June 11, 2019 at 6:30 P.M. at the Deer Valley Airport Restaurant. **This meeting maybe standing room only so be sure to arrive early.** Come hungry, order some food and enjoy the "Eat and Greet" social starting at 6:00 P.M. before the meeting. Please plan to attend and bring a friend!

Thank you for being a part of our Chap



Carlos Hernandez

[www.eaa538board@gmail.com](mailto:www.eaa538board@gmail.com)

[www.538.eaachapter.org](http://www.538.eaachapter.org)

[www.facebook.com/ea538](https://www.facebook.com/ea538)



***SECRETARY'S REPORT*****EAA Chapter 538 Monthly Meeting Minutes for May 09, 2019**

Meeting was called to order at 6:31 P.M. Carlos began with the self introduction of our visitors. A short introduction of Micah Martin, who is our member-speaker tonight. His career covers software, technical, and flight background. He recently finished building a Sonex. His next project is an electric version of the same airplane. He began by noting that current aircraft engines are with little exception still using 40 to 50 year old technology. He, along with major companies, are for environmental reasons, going to electric powered cars and airplanes. He showed examples of current electrics like the pipistrel alpha electric, Bye Aerospace Sun flyer, and NASA's X57. Big companies like Uber, Lyft, Boeing, and Siemens have built and are testing Electric powered airplanes. He details his experiments with electric skateboards. Problems such as overheating and weight. He purchased brought an Emax 268 electric motor, which at full power produces 300HP and at cruise 140HP versus the aerovee's 80HP. He is perfecting his battery controller. He showed us several RC airplanes to test electric motors in that he 3D printed. We took a short break at 7:32 P.M.

We were reminded of the June 8<sup>th</sup> Young Eagles event for the ACE academy at Glendale Airport. Roger Whittier our tech counselor gave a talk about changing the Magnitors over to electronic ignition. They are all solid state and cost around \$1500. Carlos gave a review of our successful pancake breakfast. Our next one is in October again at the Glendale Airport North of the terminal on the grass.

A member brought up a concern about hijacked N numbers being used after the pilot completes their flight. Go to Flight Aware to check. He noted that the FISDO had his airplane continuing for an hour after he had landed. If this happens send a notice to Carlos who will forward it to the FAA in Washington.

It was strongly suggested that EVERYONE start planning to get to AirVenture and the rental of camp site(s). We as a chapter can start reserving spaces in early June. The more the merrier. Also, a reminder to use smile.amazon.com to order things online so that Chapter 538 gets a few cents from your purchases.

Meeting adjourned at 8:25 P.M.

**NEWS & EVENTS**

**ASK ATC**

Do you have an ATC question but can't reach one? You're in Luck. Our own member, Steven Stenstrom works ATC for the FAA at Sky Harbor Intl Airport. He set-up an email for that. It is: [ea538atc@gmail.com](mailto:ea538atc@gmail.com) He is also happy to arrange a tour of the Phoenix Sky Harbor Control tower. Please email him on which month you can come for a tour.

**- NOTICE NOTICE -**

**CHAPTER MEMBERSHIP REMINDER:**

**2019 DUES ARE NOW DUE!  
PLEASE BRING YOUR \$20  
CASH/CHECK/PAYPAL FOR  
YOUR 2019 MEMBERSHIP  
RENEWAL.**



**2019 JUNE WALLPAPER**

**CLICK PHOTO FOR JUNE 2019 WALLPAPER**



**JUNE 2019 SPORT AVIATION MAGAZINE**

**CLICK PHOTO FOR JUNE 2019 SA MAGAZINE**



### FOR SALE PAGE

*I have a new ray Allen grip all wired and ready to go. I got it when I built my rocket but decided to use something else. I can be reached at my cell phone. 602 228 9397. Joel Haglund*



### AIR PLANE FOR SALE

2005 Van's RV-9 A N451CB - AeroSport Power Lycoming O-320 160 HP ~540 hours since New. Sensenich 2-blade Fixed Pitch Prop Trio 1-axis autopilot, Uavionics EchoUAT ADS-B In/Out, Advanced Flight Systems (now Dynon), EM-3400 full digital Engine Monitor, ICOM A200 Radio with 9 memory channels, Garmin GTX320A Transponder, Garmin 296 GPS, Flight Data Systems AFP-35 Air Data Computer, two Lightspeed Noise Canceling Headsets Elect. Trim – Aileron & Elevator, Strobes, Electric Flaps, Full Dual Controls, Sliding Canopy, Rosen Sun Shade – full length, Bruce's Canopy Cover, Fresh Annual.

#### PERFORMANCE

1400 fpm climb at 1750# Gross, Stall 50 mph, Top Speed 196 mph, Cruise 75% power at 8000 ft 186 mph, Cruise 55% power at 8000 ft 166 mph, Economy <6 gallons per hour at 175 mph .

Flight Test Info at [https://cafe.foundation/v2/pdf\\_cafe\\_apr/rv-9a.pdf](https://cafe.foundation/v2/pdf_cafe_apr/rv-9a.pdf)

Price \$69,000, Call Chuck Peterson at 602-908-7380,



**SHELVES FOR SALE -  
BEST OFFER OR \$40 EACH. - 4 SECTIONS**

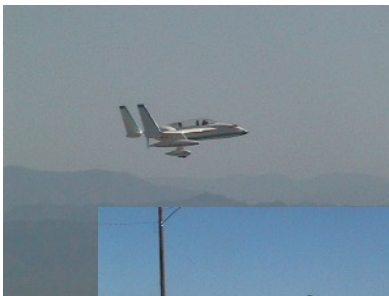
**FOR SALE PAGE 2**

Jack Norris, Chapter 538 and Copperstate Fly-In is pleased to announce his new venture as the Southwest dealer for the Flying Legend USA Tucano replica. The Tucano-R is available in

S-LSA and Experimental versions. Engine options range from factory Rotax 912, 914 and 915 and a modified 912 with a Supercharger. The Experimental version is also available with retractable gear. The airframe is suitable for light aerobatics of +6/-3 @1433 MTOW. The website is [www.flyinglegendusa.com](http://www.flyinglegendusa.com). You can contact Jack at [azaerosvc@gmail.com](mailto:azaerosvc@gmail.com) or 703-307-6775.



Tom Parten quit flying and has his 180 hp LongEz for sale and a 6 Cylinder Sonex (Tail wheel) here on Thunder Ridge Airpark AZ 28. If you know anybody looking for a good deal contact Bertha Partin <[bmpartin@gmail.com](mailto:bmpartin@gmail.com)>



**FOR SALE PAGE 3**

**ONEX FOR SALE**

a folding-wing, fighter-like, acrobatic, single-seat, tricycle-gear LSA, an 85%-scale Sonex that has a 27 inch wide cockpit. Powered by a 100 HP, turbo-charged VW engine. Dynon SkyView SE 2020-compliant ADS-B Out avionics. iPad for navigation fits in center console. With wings folded, Onex shares space in small T-hangar behind one wing of my RV-12. Flying off initial Phase I testing. Based at Deer Valley Airport (DVT) in north Phoenix. Asking \$25,000 with \$40K invested. Reason for selling? Want to build something else. [Dennymyrick@me.com](mailto:Dennymyrick@me.com) or 480-213-4906.

[Dennymyrick@me.com](mailto:Dennymyrick@me.com)  
480-213-4906

[Dennymyrick@me.com](mailto:Dennymyrick@me.com)  
480-213-4906

[Dennymyrick@me.com](mailto:Dennymyrick@me.com)  
480-213-4906

[Dennymyrick@me.com](mailto:Dennymyrick@me.com)  
480-213-4906

[Dennymyrick@me.com](mailto:Dennymyrick@me.com)  
480-213-4906

[Dennymyrick@me.com](mailto:Dennymyrick@me.com)  
480-213-4906

[Dennymyrick@me.com](mailto:Dennymyrick@me.com)  
480-213-4906

[Dennymyrick@me.com](mailto:Dennymyrick@me.com)  
480-213-4906

[Dennymyrick@me.com](mailto:Dennymyrick@me.com)  
480-213-4906

[Dennymyrick@me.com](mailto:Dennymyrick@me.com)  
480-213-4906

From Jack Norris:

The first Rotax 915is Flying Legend USA Tucano Replica is ready for its DAR inspection at the Archer City build center. It is destined for its home in California.



**FOR SALE PAGE 4**

Lightspeed 30G ANR Headset for sale. \$200

Excellent condition. New Ear seals. Complete with carry bag and AUX audio input cord.

Contact: Eric Moore 480-436-0192

**THREE DONATED AIRPLANE KITS FOR SALE**

- 1. LANCAIR IVP, WITH TURBINE OPTION MOUNT.**
- 2. BD-5 WITH B WINGS.**
- 3. A SORRELL SNS-8 HIPERLIGHT WHICH IS THE YOUNGER AND SMALLER SINGLE SEAT BROTHER OF THE WELL KNOWN SNS-7 HIPERBIPE. IT IS A COMPLETE AIRFRAME.**

**YOU CAN SEE THE PICTURES OF THESE THREE PLANE KITS ON THE CHAPTER WEBSITE:**

**[HTTPS://WWW.538.EAACHAPTER.ORG/APPS/PHOTOS/](https://www.538.eaachapter.org/apps/photos/)**

Below are examples of *COMPLETED* airplanes. The above are *INCOMPLETED* kits.





***CALLING ALL EAA CHAPTER 538 MEMBERS & VISITORS.***

Along with my request for articles, pictures, info for this newsletter, Thirty-nine (39) people out of the 60 or so members have done the ten questions at survey monkey about our chapter and how we can improve it above the great job that Carlos and the rest of the officers/board member are doing. Please take six (6) minutes out of your day to help us make our chapter even better. You can copy and paste it into a web browser and go. You can hold CTRL and click on the link below.

<https://www.surveymonkey.com/r/9NYJZBV>

If you have any ideas for speakers for the chapter meetings please forward them to Alex. I am starting 2019 speakers and am looking for the June speaker.

***MEMBERS INFORMATION***

John Gregg has us registered for amazon smile.

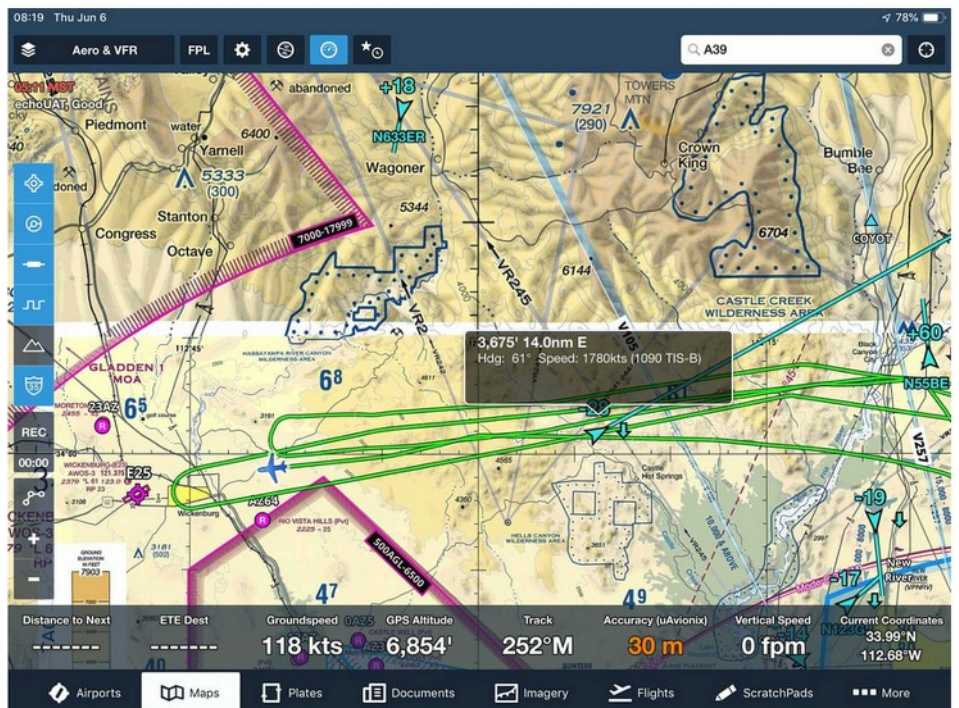
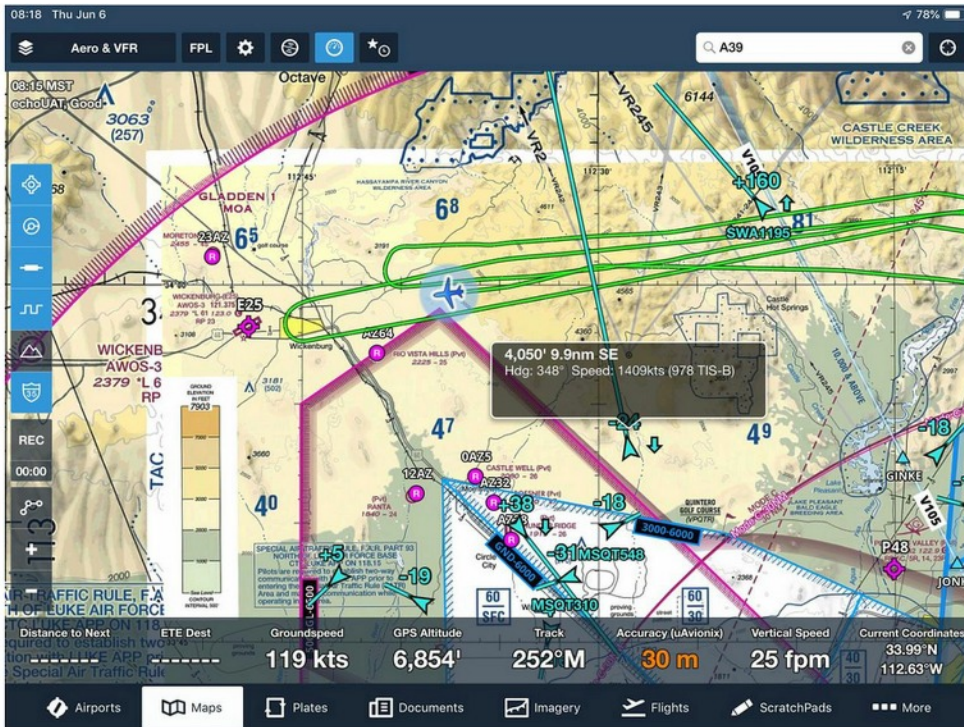
<https://smile.amazon.com/>

When you log into the Amazon Smile site, you must select the charity you are supporting. You will see this area in the black upper band middle of the screen. Note: Currently, Guide Star, the company that Amazon uses to verify qualified charities only utilizes the first line of our name: "EAA 538" is used. Once on the Amazon Smile site, you will order as usual. **Thanks John Gregg Jr.**

Joe Statt <JoeS@sdlh1.com>  
Jun 8 at 11:53 A.M.

Hello Alexander,

I did want to share something that may be interesting, but maybe everyone already knows. I have been working on my phase 1 fly-off and am operating on the north side of the class bravo. Three days in a row, I have seen on TIS-B, high speed targets in and out of Luke. What makes it notable and worth mentioning is that this is outside the SATR, the alert area, and the MOA. As you'll see on my screenshots, nearly Mach 2 at 4000 feet. Be careful out there!



# AIRPORT OF THE MONTH - PHOENIX GATEWAY IN MESA

allegiant® Flight Hotel Car Deals Check-in Manage Travel Route Map Flight Status ▾ my Log in ? Help

## Phoenix-Mesa Gateway Airport (AZA)

6033 S Sossaman Road, Mesa, AZ 85212 | [Terminal Map](#) | [Driving Directions](#)



Phoenix-Mesa Gateway Airport (AZA) is located in the southeastern area of Mesa and 20 miles southeast of Phoenix. Allegiant operates out of Charles L. Williams Passenger Terminal, which also features three rental car companies (Alamo National, Enterprise Rent-A-Car and Hertz), Arizona Highways gift shop and other retail shop and restaurants. Hourly, daily and economy parking lots are adjacent to the airport.

**BOOK TRIP**

Departure City

Destination City

Round Trip

Departure Date  Return Date

Adults (15+)  Children (0-14)

**SEARCH**

Optional Services & Fees Changed Bag Fees & Policy 10+ Travelers

### Inside the Terminal

In addition to the Arizona Highways gift shop is The Phoenix...

### Phoenix-Mesa Gateway Airport Terminal Map



Phoenix–Mesa Gateway Airport (IATA: AZA, ICAO: KIWA, FAA LID: IWA), formerly Williams Gateway Airport (1994–2008) and Williams Air Force Base (1941–1993), is an international airport in the southeastern area of Mesa, Arizona, and 20 miles (17 nmi) southeast of Phoenix, in Maricopa County, Arizona. The airport is owned and operated by the Phoenix–Mesa Gateway Airport Authority, and is a reliever airport for Phoenix Sky Harbor International Airport. It is a base for Allegiant Air. The airport authority is governed by a six-member board: the mayors of the towns of Gilbert and Queen Creek, the mayors of the cities of Mesa, Phoenix, and Apache Junction, and the tribal governor of the Gila River Indian Community.

***AIRPORT OF THE MONTH - PHOENIX GATEWAY IN MESA CONTINUED***

The FAA's National Plan of Integrated Airport Systems for 2007–2011 called Phoenix–Mesa Gateway a reliever airport, which is a general aviation airport used to relieve congestion at a large airline airport. Allegiant Air began scheduled service from Mesa in October 2007. Phoenix Mesa Gateway Airport records say the airport had 1,338,216 passenger boardings in calendar year 2017. Most U.S. airports use the same three-letter location identifier for the FAA and IATA, but Phoenix–Mesa Gateway Airport has different codes for each. The aviation community generally uses the FAA code of IWA, while commercial passenger flight organizations use the IATA code of AZA.

**History**

The airport was built in 1941 as Higley Field; it was renamed Williams Field on 24 February 1942 in honor of Arizona native 1st Lt. Charles Linton Williams (1898–1927), who while serving with the 19th Pursuit Squadron from Wheeler Field, Oahu was killed when he had to ditch his Boeing PW-9A, 26-353, in the Pacific Ocean about a mile off of Fort DeRussy, Territory of Hawaii. Then in 1948 the field was acquired by the United States military and renamed Williams Air Base in January 1948. It was a flight training field during World War II.

In 1948 Williams became the first jet training base, and in 1966 it was the first site of the Undergraduate Pilot Training (UPT) program. The 1991 Base Realignment and Closure Commission recommended closing the base, and it closed in 1993.

As the base was being shut down it was decided that, with the growing traffic at Sky Harbor International Airport in Phoenix, an alternative airport would be needed. The runway was expanded to accommodate airliners and the facility opened in 1994 as Williams Gateway Airport. Bids began for some airlines to begin flights almost immediately.

In 2004 charter airline Ryan International Airlines began MD-82 flights to Bullhead City International Airport in Bullhead City, Arizona, next to Laughlin, Nevada and many resorts.

In recent years the airport has again become a center of flight training; several flight schools take advantage of the weather in the Phoenix valley.

On July 31, 2007 the low-cost Las Vegas-based carrier Allegiant Air announced plans to open a focus city at Phoenix–Mesa Gateway Airport, connecting the Phoenix area to 13 cities. Service commenced on October 25, 2007, with cities being added until November 21, 2007.[4]

In a press release on September 17, 2007, the Williams Gateway Airport Authority governing board approved a name change for Williams Gateway Airport effective October 15, 2007 to Phoenix–Mesa Gateway Airport.

## ***AIRPORT OF THE MONTH - PHOENIX GATEWAY IN MESA CONTINUED***

### **History continued.**

On June 16, 2015, after Elite Airways announced non-stop flights from San Diego and Salt Lake City to Phoenix–Mesa, Allegiant threatened to leave the airport. This is primarily due to the incentives the airport is offering to Elite. If Allegiant were to leave, it would consider relocating to the nearby Phoenix Sky Harbor International Airport.

On January 21, 2017 Phoenix-Mesa welcomed its first international flight and first two international destinations, as Westjet inaugurated its seasonal service to Calgary and Edmonton, Alberta. Westjet has already seen success at Phoenix Sky Harbor for years, with Calgary and Edmonton being the 1st and 6th most popular international destinations at Sky Harbor, respectively.

### **Facilities**

The airport covers 3,020 acres (1,220 ha) and has three paved runways:[1]

12C/30C: 10,201 ft × 150 ft (3,109 m × 46 m) Asphalt/Concrete

12L/30R: 9,300 ft × 150 ft (2,835 m × 46 m) Concrete

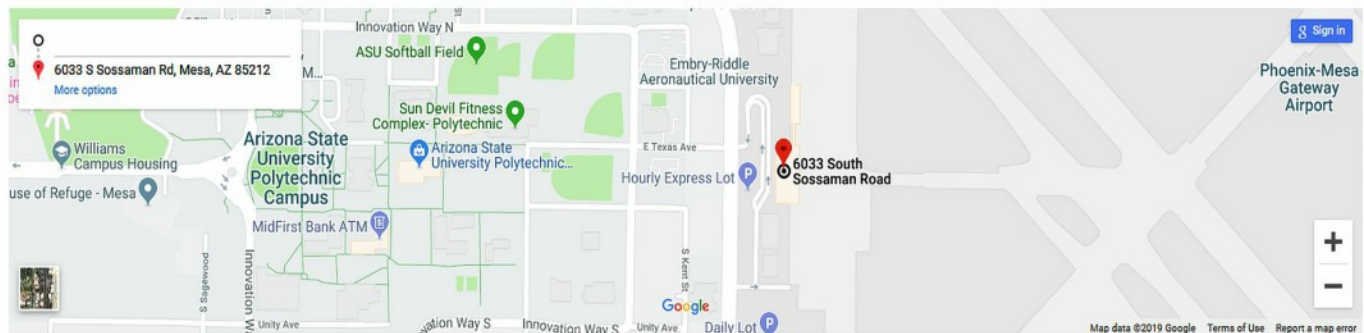
12R/30L: 10,401 ft × 150 ft (3,170 m × 46 m) Concrete

In the year ending December 31, 2017 the airport had 290,452 aircraft operations, average 796 per day: 80% general aviation, 13% air taxi, 4% airline and 3% military. In 2017, 138 aircraft were based at this airport: 88 single-engine, 21 multi-engine and 29 jet.

#### **Address and Directions**

Charles L. Williams Terminal  
6033 South Sossaman Road  
Mesa, Arizona 85212

[Terminal map](#)



#### **Terminal Hours**

The terminal is open 24 hours a day, every day of the week. Allegiant's ticket sale hours (in person) are Sundays and Mondays, 12:00 pm - 2:00 pm Please visit the [Airlines and Destinations](#) page for airline contact information.

## AIRPORT OF THE MONTH - PHOENIX GATEWAY IN MESA CONTINUED

AIRNAV.COM

*Air Wisconsin* Join our team with as little as **\$8,995 NOW**  
250 hours as an Airman Trainee

[Airports](#)
[Nav aids](#)
[Airspace Fixes](#)
[Aviation Fuel](#)
[Hotels](#)
[iPhone App](#)

[My AirNav](#)
1402 users online [LOG IN](#)

**KIWA** Phoenix-Mesa Gateway Airport  
Phoenix, Arizona, USA



GOING TO PHOENIX?

[TOWNEPLACE SUITES MARRIOTT](#)
[Hertz](#)

[Reserve a Hotel Room](#)
[Reserve Online](#)

### FAA INFORMATION EFFECTIVE 23 MAY 2019

#### Location

FAA Identifier: IWA  
 Lat/Long: 33-18-28.2000N / 111-39-19.7000W  
 33-18.470000N / 111-39.328333W  
 33.3078333 / -111.6554722  
 (estimated)  
 Elevation: 1383.9 ft. / 421.8 m (surveyed)  
 Variation: 13E (1980)  
 From city: 20 miles SE of PHOENIX, AZ  
 Time zone: UTC -7 (year round; does not observe DST)  
 Zip code: 85212



Road maps at: [MapQuest](#) [Bing](#) [Google](#)

#### Airport Operations

Airport use: Open to the public  
 Activation date: 12/1993  
 Control tower: yes  
 ARTCC: ALBUQUERQUE CENTER  
 FSS: PRESCOTT FLIGHT SERVICE STATION  
 NOTAMs facility: IWA (NOTAM-D service available)  
 Attendance: CONTINUOUS  
 Pattern altitude: 2601.9 ft. MSL  
 TPA FIXED WING 1218 FT AGL, JET 1,718 FT AGL,  
 ROTORCRAFT 718 FT AGL.  
 Wind indicator: yes  
 Segmented circle: yes  
 Lights: FOR REIL RYS 12L & 30R CTC ATCT. AFTER ATCT  
 CLSD, ARPT LGTS REMAIN ON.  
 Beacon: white-green (lighted land airport)  
 Operates sunset to sunrise.  
 Landing fee: yes, NO LDG FEE FOR US GOV OWNED, NON-  
 REVENUE AND FLIGHT TRAINING ACFT UP TO  
 12,500 LBS.  
 Fire and rescue: ARFF index C  
 International operations: US CUSTOMS USER FEE ARPT.

#### Aerial photo

WARNING: Photo may not be current or correct



Photo by Gary Chambers  
Photo taken 23-May-2004  
from FL260 looking south

Do you have a better or more recent aerial photo of Phoenix-Mesa Gateway Airport that you would like to share? If so, please [send us your photo](#).

#### Sectional chart

## AIRPORT OF THE MONTH - PHOENIX GATEWAY IN MESA CONTINUED

AirNav: KIWA - Phoenix-Mesa Gateway Airport

<http://aimav.com/airport/KIWA>

### Airport Communications

CTAF: 120.6  
 ATIS: 133.5 270.275  
 WX AWOS-3: 133.5 (480-988-9428)  
 GATEWAY GROUND: 128.25 275.8 [0500-2400]  
 GATEWAY TOWER: 120.6 289.4 [0500-2400]  
 PHOENIX APPROACH: 124.9  
 PHOENIX DEPARTURE: 124.9  
 CLEARANCE DELIVERY: 135.05  
 BLYTHE STAR: 124.1  
 DSERT STAR: 120.7  
 EMERG: 121.5 243.0  
 HUUTY STAR: 124.9  
 JOBS STAR: 120.7  
 WX AWOS-3PT at CHD (8 nm W): 128.325 (480-814-9952)  
 WX ASOS at FFZ (10 nm N): 118.25 (480-641-4111)  
 WX ASOS at PHX (19 nm NW): PHONE 602-231-8557

- ATCT OPERATED BY SERCO MGT SERVICES.
- ELEV 1368.0 FT

### Nearby radio navigation aids

VOR radial/distance	VOR name	Freq	Var
<a href="#">IWA</a> at field	WILLIE VORTAC	113.30	13E
<a href="#">PXR</a> r103/17.5	PHOENIX VORTAC	115.60	12E
<a href="#">TFD</a> r015/28.3	STANFIELD VORTAC	114.80	12E

NDB name Hdg/Dist Freq Var ID  
[CHANDLER](#) 060/8.0 407 12E CHD -.-. .... -.-

### Airport Services

Fuel available: 100LL JET-A  
 FUEL AVBL 24 HRS CTC 480-988-7700 OR 129.875.  
 Parking: hangars and tie-downs  
 Airframe service: MINOR  
 Bottled oxygen: HIGH/LOW

### Runway Information

#### Runway 12R/30L

Dimensions: 10401 x 150 ft. / 3170 x 46 m  
 Surface: concrete, in good condition  
 Weight bearing capacity: PCN 71 /R/C/W/T  
 Single wheel: 55.0  
 Double wheel: 95.0  
 Double tandem: 185.0  
 Dual double tandem: 550.0

Runway edge lights: medium intensity

<b>RUNWAY 12R</b>	<b>RUNWAY 30L</b>
Latitude: 33-19.060238N	33-17.835718N
Longitude: 111-40.372062W	111-38.942228W



### Airport diagram

CAUTION: Diagram may not be current



[Download PDF](#)  
 of official airport diagram from the FAA

### Airport distance calculator

Flying to Phoenix-Mesa Gateway Airport?  
 Find the distance to fly.

From  to KIWA

### Sunrise and sunset

*Times for 06-Jun-2019*

	Local (UTC-7)	Zulu (UTC)
Morning civil twilight	04:49	11:49
Sunrise	05:18	12:18
Sunset	19:33	02:33
Evening civil twilight	20:01	03:01

### Current date and time

Zulu (UTC) 06-Jun-2019 17:44:11  
 Local (UTC-7) 06-Jun-2019 10:44:11

### METAR

**KIWA** 061650Z 20004KT 10SM SKC 32/06 A2994  
**KCHD** 061647Z 00000KT 10SM CLR 31/06 8nm W A2992  
**KEEZ** 061654Z 00000KT 10SM CLR 32/03 10nm N A2992 RMK AO2 SLP106 T03170028

### TAF

**KIWA** 061120Z 0612/0712 12006KT P6SM FEW140 FM061700 28007KT P6SM FEW250 FM062100 28010G18KT P6SM FEW250 FM070300 26008KT P6SM FEW250 FM070700 10005KT P6SM FEW250

# AIRPORT OF THE MONTH - PHOENIX GATEWAY IN MESA CONTINUED

## Top Attractions in Mesa

Sort by: Traveler Favorites ?



1

NATURE & PARKS

### Usery Mountain Regional Park

580 reviews

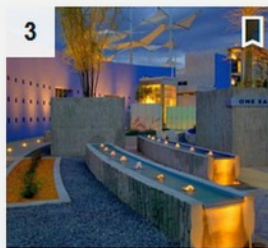


2

MUSEUMS

### Commemorative Air Force Museum

515 reviews



3

MUSEUMS

### Mesa Arts Center

502 reviews



4

MUSEUMS

### Arizona Museum of Natural History

325 reviews



5

SIGHTS & LANDMARKS

### Organ Stop Pizza

537 reviews



6

SHOPPING

### Mesa Market Place Swap Meet

747 reviews



7

NATURE & PARKS

### Riverview Park

104 reviews



8

CONCERTS & SHOWS

### Silver Star Theater

170 reviews



9

NATURE & PARKS

### Rose Garden at Mesa Community College

74 reviews



10

SIGHTS & LANDMARKS

### Hohokam Stadium

134 reviews



## WEBINARS FOR JUNE 2019

**[URL: HTTP://WWW.EAAVIDEO.ORG/CATEGORY/VIDEOS/WEBINARS](http://www.eaavideo.org/category/videos/webinars)**

### EAA Webinars Schedule

We've announced our [June and July webinars](#) that you can enjoy from the comfort of your home. EAA webinars are free to all aviation enthusiasts. Pre-registration is recommended since space is limited to the first 1,000 registrants.

[Register Now →](#)

Upcoming webinars include the following topics and presenters:

#### June Webinars

---

##### **Rush to Judgement**

Wednesday, June 5 at 7 p.m. CDT

Presenter: Mike Busch | *Qualifies for FAA Wings and AMT credit.*

[Register Now →](#)

---

##### **EAA Flying Clubs – Growing Participation in Aviation**

Thursday, June 6 at 12 p.m. CDT

Presenter: David Leiting

[Register Now →](#)

---

##### **Tips for Flying Into EAA AirVenture 2019**

Tuesday, June 11 at 7 p.m. CDT

Presenter: Fred Stadler | *Qualifies for FAA WINGS credit.*

[Register Now →](#)

---

##### **AirVenture 2019 Ultralight/Homebuilt Rotorcraft Arrival Procedures**

Wednesday, June 12 at 7 p.m. CDT

Presenter: Mark Spang | *Qualifies for FAA WINGS credit.*

[Register Now →](#)

---

##### **Managing Energy and Developing Style: A Beginner's Guide to Advancing in Aerobatics**

Tuesday, June 18 at 7 p.m. CDT

Presenter: Aaron McCartan | *Qualifies for FAA Wings credit.*

[Register Now →](#)

---

##### **EAA AirVenture 2019 Features and Attractions**

Wednesday, June 26 at 7 p.m. CDT

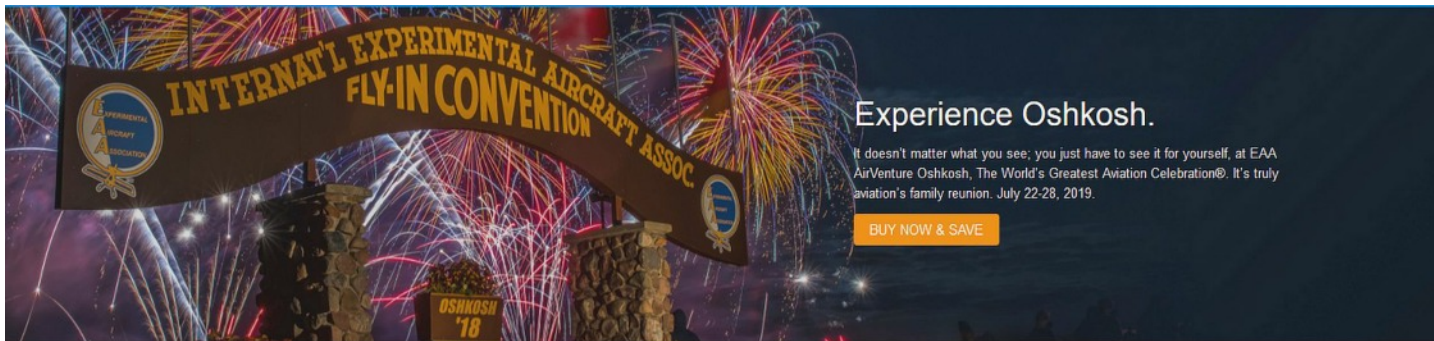
Presenters: Rick Larsen and Dennis Dunbar

[Register Now →](#)

---

**NEWS ABOUT AIRVENTURE 2019**

<https://eaa.org/airventure/eaa-airventure-tickets>



**Experience Oshkosh.**

It doesn't matter what you see; you just have to see it for yourself, at EAA AirVenture Oshkosh, The World's Greatest Aviation Celebration®. It's truly aviation's family reunion. July 22-28, 2019.

[BUY NOW & SAVE](#)



**"Year of the Fighter" at AirVenture 2019**

A roster of legendary American military aircraft in history, from iconic World War II airplanes to today's most sophisticated flying machines, will be on display at AirVenture 2019.

[Read More](#)



**The Fray, Animal Years Bring Star Power to AirVenture 2019 Opening-Night Concert**

The Fray, which has spent the last 15 years on the Top 100 charts, will bring its pop/rock sounds to EAA AirVenture Oshkosh 2019 as the featured performer at the annual opening night concert presented by Ford Motor Company on Monday, July 22.

[Read More](#)



**Astronaut Michael Collins to Highlight Apollo 11 50th Anniversary at AirVenture 2019**

Apollo 11 command module pilot Michael Collins will be the featured guest at AirVenture 2019 commemorates the 50th anniversary of the Apollo 11 mission, which in July 1969 marked the first time men landed on the moon and returned safely.

[Read More](#)



**Buy Your EAA AirVenture Oshkosh Tickets**

Purchase your EAA AirVenture Oshkosh admissions, camping, parking, and merchandise in advance!

AirVenture 2019 dates: Monday, July 22-Sunday, July 28. You may purchase a daily ticket for any of the seven days, or a weekly pass, which includes all seven days.

Note: If your EAA membership is not current, please [click here to renew](#), and allow 48 hours for processing before purchasing your tickets at member rates.

**It's fast and easy!** With a few simple steps, you'll be inside the gates in no time and ready to take in AirVenture. You'll simply select weekly or daily tickets, enter the number of tickets you'll need for each category, pay by credit card using our secure online system, print your barcoded ticket(s), present your ticket at any entry point to receive your AirVenture wristband, and breeze through the lines. If you purchased tickets at the preferred EAA member rate, please be prepared to display your valid EAA membership card when you have your e-ticket scanned at the gate.

**Early bird discount ends June 15, 2019.**

**Weekly Pass** (Includes 7/22-7/28)

EAA Member Adult: \$425 \$120  
 EAA Member Guest: \$425 \$120  
 EAA Student Member (6-18): \$47  
 Children (5 and under): FREE

[Buy Member Weekly Tickets](#)

**Daily Tickets**

EAA Member Adult: \$36 \$34  
 \*EAA Member Guest: \$36 \$34  
 EAA Student Member (6-18): \$17  
 Children (5 and under): FREE  
 Nonmember Adult: \$60 \$48  
 Nonmember Student (6-18): \$20  
 Veterans/Active Military (purchase as nonmember): \$36 - Available only when purchased online  
 \*Members can buy up to 14 days of adult passes at member rate.  
 • Members can buy up to two weekly adult passes. Weekly passes count as seven days towards the total of 14.  
 • Purchase of admission for Monday, July 22 allows entry to AirVenture grounds on Sunday, July 21

[Buy Member Daily Tickets](#)



**Thank you for being one of more than 8,000 members who have downloaded SOLIDWORKS!**

**SOLIDWORKS University—it's back and enhanced for 2019!**

Last year, we offered SOLIDWORKS learning opportunities to nearly 400 people. The feedback was overwhelmingly positive—so we're bringing it back and we wanted you to be the first to have the opportunity to sign-up for the **EAA SOLIDWORKS University** at EAA AirVenture Oshkosh 2019!

This year, we've added two (2) additional instructor-led sessions per day, headsets to enhance the learning experience in the ever-popular EAA Innovation Showcase tent, 3D printers, and we'll continue to offer practical, aviation-specific training content to help you explore SOLIDWORKS.

- **Experience:** 10 workstations, 4 instructor-led Quick Start sessions per day, 4 open lab self-guided sessions per day, SOLIDWORKS support volunteers
- **Date/Times:** Monday-Friday - Instructor-led, Quick Start - 9 and 10 a.m., 1 and 2 p.m.; Open Lab, Self-paced: 11 a.m., 12, 3 and 4 p.m.; Saturday-Sunday - Open Lab, Self-paced - 1-hour slots, 9 a.m.-5 p.m.
- **Location:** [Innovation Showcase at Aviation Gateway Park](#)
- **Signup:** Sign-up online now or during EAA AirVenture Oshkosh 2019 at any SOLIDWORKS booth (EAA Aviation Museum main floor, Homebuilders Hangar, EAA Member Center)

[SIGN UP NOW](#)

## ***MORE ACTIVITIES AT OSHKOSH***

### **Exhibits & Shopping**

From model airplanes to full-size jets and just about everything in between, explore all of what AirVenture has to offer for the aviation consumer.



#### **Exhibitors**

Visit some (or all) of the more than 800 exhibitors that showcase their products and services.



#### **Aviation Gateway Park**

Aviation Gateway Park helps attendees discover the possibilities in innovation and education, as well as careers in aviation.



#### **Red One Market**

Your one-stop shopping experience for groceries, bakery, deli, sandwiches, camping goods, and AirVenture merchandise!



#### **Fly Market**

Find a vast array of exhibitors and products, product demonstrations, and much more.



#### **Aeromart**

Turn old aircraft parts into cash, with the added satisfaction that you have helped other EAA members complete their projects.



#### **Merchandise Locations**

Get your exclusive EAA AirVenture Oshkosh merchandise at several locations throughout the grounds.



#### **Daily Air Show Schedule**

Check out the spectacular events, aircraft, and performers that highlight our daily air show.



#### **Night Air Shows**

What do you get when you combine aerobatics with fireworks? A must-see spectacle!



#### **Performers**

The world's best aerobatic performers are showcased daily at Oshkosh.

## **NEWS & FEATURES**

### **Air Combat Command Demo Teams to Perform at AirVenture 2019**

5/23/2019

Three U.S. Air Force Air Combat Command demonstration teams will be performing at EAA AirVenture Oshkosh 2019. [Read More](#)

### **Twilight Flight Fest to Continue at AirVenture 2019**

4/18/2019

After a successful debut at EAA AirVenture Oshkosh 2017 and an expanded sophomore lineup during AirVenture 2018, Twilight Flight Fest at ... [Read More](#)

**YOUNG EAGLES JUNE 8- PICTURES.**

