



January 2021 Newsletter Volume 45, Number 01

The Static Line

Leroy Castle Memorial EAA Chapter 538 Phoenix, AZ

Website: <https://chapters.eaa.org/ea538>

Email: ea538board@gmail.com

Facebook: www.facebook.com/ea538



Monthly meeting are the second Tuesdays of every month starting 6:30 P.M. At 7856 North Glen Harbor Blvd.. Glendale.

IN THIS ISSUE

Calendar of Events & Index	pg. 1
Officers & Directors	pg. 1
Presidents Report	pg. 2
Secretary Monthly Minutes	pg. 3
Download & Hints for ZOOM	pg. 4
Continues to	pg. 5
Notices, Sport Aviation, Wallpaper	pg. 6
More Notices	pg. 7
Webinars for January 2019	pg. 8
For Sale	pg. 9
For Sale Continues to	pg. 15
Airport of the Month Falcon Field,	pg. 16
Airport continues to	pg. 22
Stitts Executive article	pg. 23
Continues to page	pg. 25
Notice convert to online Roster	pg. 26
Thank You to Donors for hangar	pg. 27
EAA Homebuilders week	pg. 28
Continues to page	pg. 31
Member Renewal form	pg. 32
New Member form	pg. 33
Hangar Donation page	pg. 34

2021 CHAPTER OFFICERS / DIRECTORS

- President – Darren Henley
 Email: p51bldr@yahoo.com
- Vice President – Katie Velvick
 Email: rv4chick@cox.net
- Treasurer – John Gregg
 Email: jgregg.jr@gmail.com
- Secretary – Alexander Bodak III
 Email: cpucoach@yahoo.com
- 1 year Director – Tad Daughters
 Email: tadenslt@lycos.com
- 2 year Director - Stuart Snow
 Email: stuartsn.ss@gmail.com
- 3 year Director - Mike Hauser
 Email: azgtrman@yahoo.com
- Newsletter Editor – Alex Bodak
 Email: cpucoach@yahoo.com
- Webmaster – Carlos Hernandez
 Email: pazmany.ch@gmail.com

2021 CALENDAR

- January 12, 2021
 February 9, 2021
 March 9, 2021
 April 13, 2021
 May 11, 2021
 June 08, 2021
 July 13, 2021
 August 10, 2021

PRESIDENTS JANUARY REPORT

Hello members, family and friends of EAA Chapter 538. Welcome to the year 2021.

I hope everyone had a happy and joyous Christmas. As the old year came to a close, we faced many challenges over the year. CoVID-19 threw a big monkey wrench into the works. We lost our meeting place at the Deer Valley Airport Restaurant. It canceled all of our activities for the year and put some difficulties into having our chapter meetings. I would like to thank Larry Polhill for providing us his place of business as a meeting place until we get a permanent one of our own. I would also like to thank John Warner who provides the account from which we can provide our on-line meetings.

As we move into 2021 we are again filled with the promise of a new year. With an open slate before us, here is a chance to begin again. While still presented with certain difficulties, we have the opportunity to overcome and to build a new future. Out of the ashes, the phoenix arose. Now is our time. With the building of our new hangar, we will have a new and permanent home. This will be our meeting place, our base of operations. From here we will plan new activities such as pancake breakfasts, fly-ins, fly-outs, Young Eagles, hosting of seminars, and of course building of airplanes. Over the course of the year, we will keep you apprised of the hangar progress. We will continue to accept donations for the project. Mostly what we will need are material donations of such things that would build the clubhouse within the hangar. These things will of the things like conduit, junction boxes, doors and frames, light fixtures, bathroom fixtures, et cetera. Take a look to see if any of these sorts of things that you may be willing to donate.

Regrettably, the Buckeye Air Fair has been canceled for this year. Copperstate Fly-In will be determined on January 16, 2021 monthly meeting as to if it is held, and in what form. We hope that this and other airshows will continue to be in the future.

I would like to welcome all of the new members that we have gained over the last few months. It is persons like you that will add to this chapter. Your membership continues to grow the organization and it is our hope that you will eventually inherit the chapter and continue it on for future generations.



EAA Chapter 538 December 09, 2021 Meeting Minutes

Thanks to John Gregg for this summary of the Christmas party.

By my count, we had 17 people at the Christmas party. They had us spread out, everyone had a very nice time! Wish you could have been there. Here are my scraggly notes.

If anyone sees any mistakes, please let me know.

For Carlos's list, Paul Fisher donated to the hangar fund too!

\$50 AC Spruce gift cards: Corey Jones and Stuart Snow

\$25 gift cards: Katie Velvick, Steve Stenstrom, Mike Samons, Honey Whittier, Darren Henley, Aaron Terry.

(FYI: Katie donated 2 ea. \$25 gift cards) (The Chapter donated 4 ea. \$25 gift cards)

2021 free memberships: Paul Fisher and Cheri McGunagle

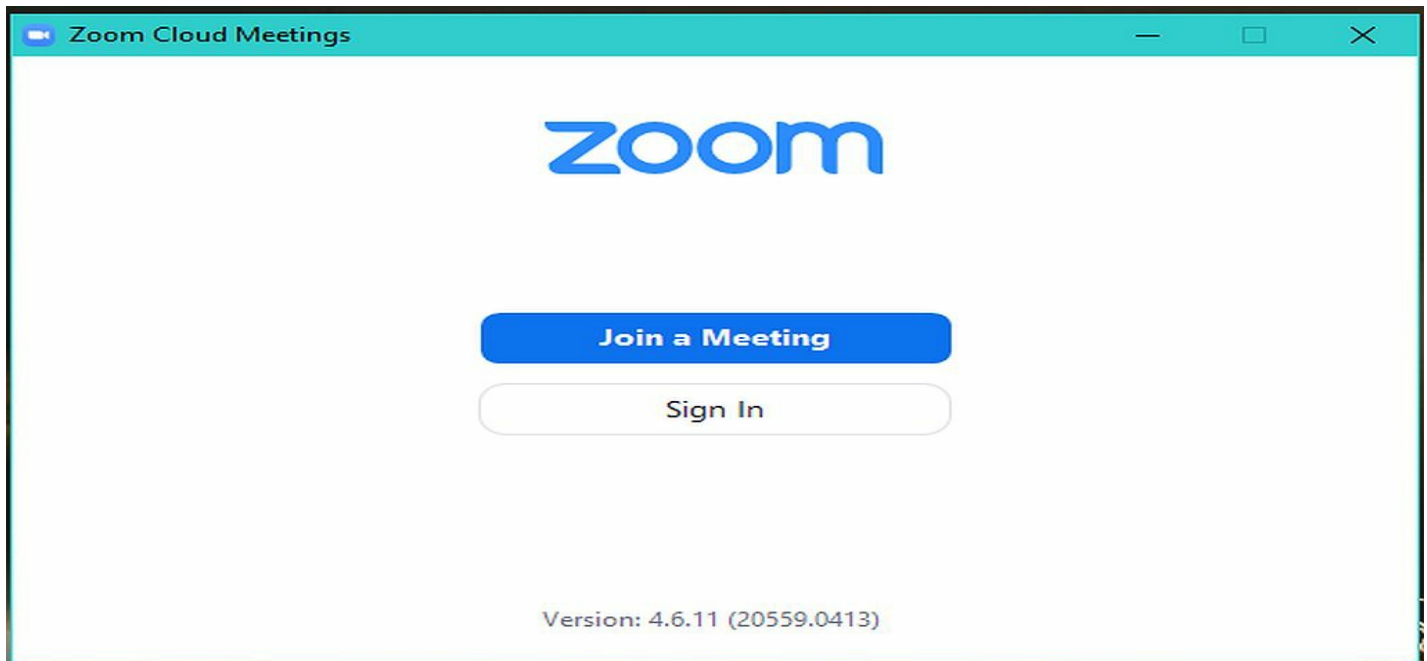
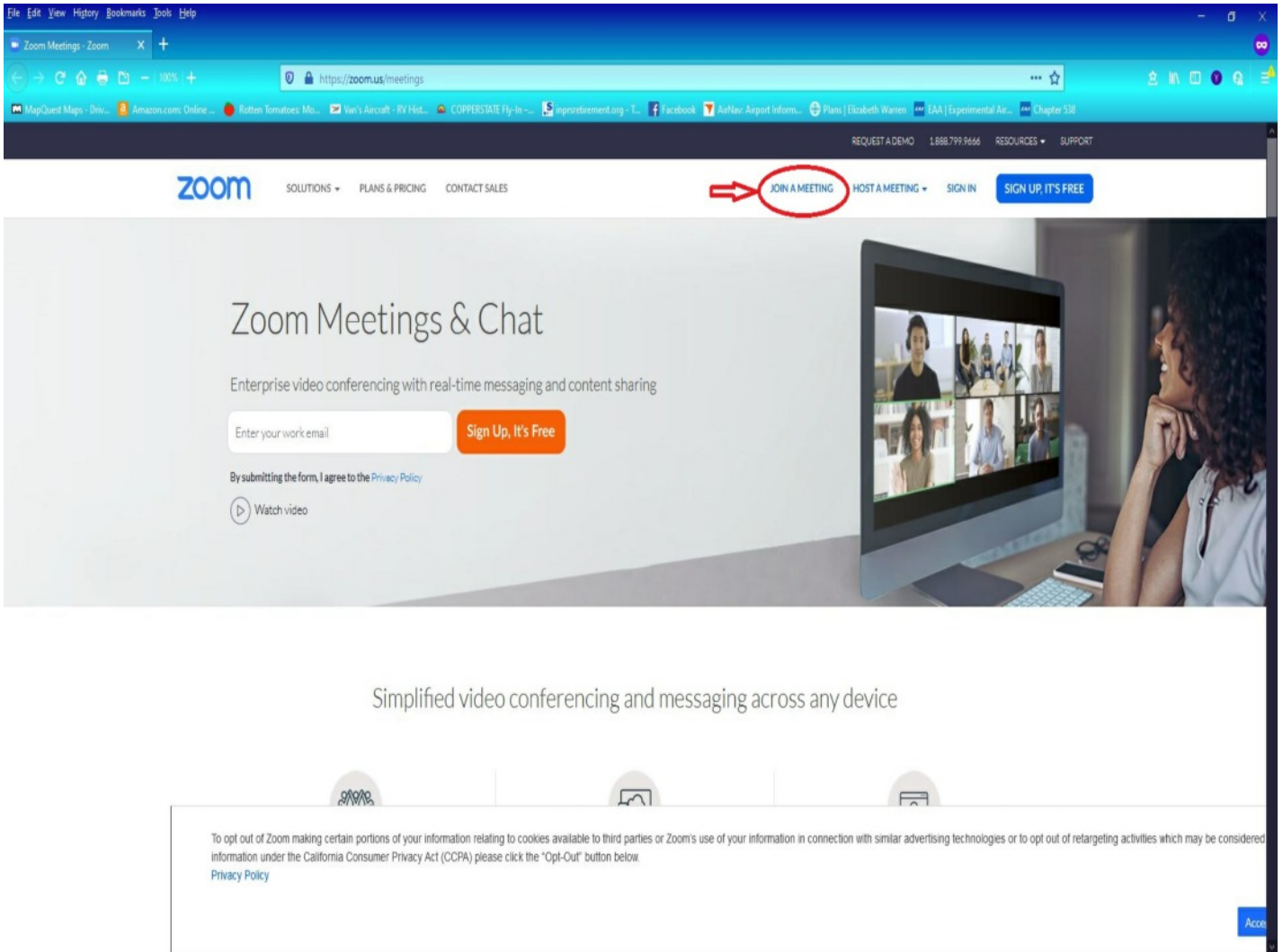
2021 calendars: Roger Whittier and Lynn Snow

Best Regards,

Gone West. David Evans. Our condolences to his family and friends.



GO TO THE ZOOM HOME PAGE [HTTPS://SUPPORT.ZOOM.US](https://support.zoom.us) AND SELECT JOIN A MEETING



INSTRUCTIONS ON HOW TO LOG INTO THE ZOOM

MEETING FOR TUESDAY JANUARY 12, 2021 AT 6:30 P.M.

From: John Warner <johnawarnercpa@hotmail.com>

Sent: Wednesday, January 6, 2021 11:10 A.M.

To: Alexander Bodak <cpucoach@yahoo.com>

Subject: Re: Speaking for January 11th Monthly Meeting.

I have set up a monthly recurring Zoom meeting for Ch. 538, here are the details and link. We can use the same meeting link for the Board test meeting this weekend. Please share as appropriate.

First you must download the ZOOM client per the previous pages. Then copy and past the web address into your browser. Hit enter and away you go.

Join Zoom Meeting

<https://us02web.zoom.us/j/83784992440?pwd=UkhiYzZFaUJYb0RMRGVjc2N5TFNzUT09>

Meeting ID: 837 8499 2440

Password: 054015

One tap mobile

+16699009128,,83784992440#,,1#,054015# US (San Jose)

+12532158782,,83784992440#,,1#,054015# US (Tacoma)

Dial by your location

+1 669 900 9128 US (San Jose)

+1 253 215 8782 US (Tacoma)

+1 346 248 7799 US (Houston)

+1 646 558 8656 US (New York)

+1 301 715 8592 US (Germantown)

+1 312 626 6799 US (Chicago)

Meeting ID: 837 8499 2440

Password: 054015

Find your local number: <https://us02web.zoom.us/j/kcHo81U9i3>

NEWS & EVENTS

- NOTICE NOTICE -

CHAPTER MEMBERSHIP REMINDER:

2021 DUES ARE NOW DUE! PLEASE BRING YOUR \$20 CASH/CHECK/PAYPAL. YOUR DUES RUN FROM JAN 1 TO DEC 31 OF THE YEAR. ALSO, DARREN'S \$100 HANGAR DONATION CHALLENGE!



LARRY POLHILLS FAIRCHILD



2021 JANUARY WALLPAPER

CLICK PHOTO FOR JANUARY 2021 WALLPAPER



JANUARY 2021 SPORT AVIATION MAGAZINE

CLICK PHOTO FOR JANUARY 2021 SA MAGAZINE



Calling All EAA Chapter 538 members & Visitors.

Along with my request for articles, pictures, info for this newsletter, 42 people out of the 60 or so members have done the ten questions at survey monkey about our chapter and how we can improve it above the great job that Darrin and the rest of the officers/board member are doing. Please take six (6) minutes out of your day to help us make our chapter even better. You can copy and paste it into a web browser and go. You can hold CTRL and click on the link below. If you have already done it, once is enough. Thanks

<https://www.surveymonkey.com/r/9NYJZBV>

If you have any ideas for speakers for chapter meetings please forward them to Alex.

– NOTICE NOTICE –

Chris Rute will loan his airplane scales for a donation to the chapter.

Members Information

John Gregg has us registered for amazon smile.

<https://smile.amazon.com/>

When you log into the Amazon Smile site, you must select the charity you are supporting, 538. You will see this area in the black upper band middle of the screen. Note: Currently, Guide Star, the company that Amazon uses to verify qualified charities only utilizes the first line of our name: "EAA 538" is used. Once on the Amazon Smile site, you will order as usual. **Thanks John Gregg Jr.**

WEBINARS FOR JANUARY 2021

[URL: HTTP://WWW.EAAVIDEO.ORG/CATEGORY/VIDEOS/WEBINARS](http://www.eaavideo.org/category/videos/webinars)

January Webinars

The Sonerai Story

TUESDAY, JANUARY 5, AT 7 P.M. CST

Presenter: John Monnett | *Homebuilders Webinar Series*

[Register Now >](#)

It's Baffling

WEDNESDAY, JANUARY 6, AT 7 P.M. CST

Presenter: Mike Busch | *Qualifies for FAA WINGS and AMT credit.*

[Register Now >](#)

Huey: Saving an Icon from the Vietnam War

TUESDAY, JANUARY 12, AT 7 P.M. CST

Presenter: Chris Henry | *Museum Webinar Series*

[Register Now >](#)

Surviving Carbon Monoxide

WEDNESDAY, JANUARY 13, AT 7 P.M. CST

Presenter: Prof. H. Paul Shuch | *Qualifies for FAA WINGS and AMT credit.*

[Register Now >](#)

The International Aerobatic Club Turns 50 Years Old and It's a Golden Birthday!

TUESDAY, JANUARY 19, AT 7 P.M. CST

Presenters: Lorrie Penner, Mike Heuer, Debby Rihn Harvey, and Rob Holland

[Register Now >](#)

EAA Homebuilders Week

TUESDAY, JANUARY 26 - SATURDAY, JANUARY 30 | 1 P.M. CST - 8:15 CST DAILY

Presenters: Various Aircraft Building Industry Leaders

[Register Now >](#)

FOR SALE PAGE 1

**SHELVES FOR SALE -
BEST OFFER OR \$40 EACH. - 4 SECTIONS
CONTACT DARREN HENLEY AT EMAIL: P51BLDR@YAHOO.COM**



Tom Parten quit flying and has his 6 Cylinder Sonex (Tail wheel) here on Thunder Ridge Airpark AZ 28.

If you know anybody looking for a good deal contact Bertha Partin <bmpartin@gmail.com>

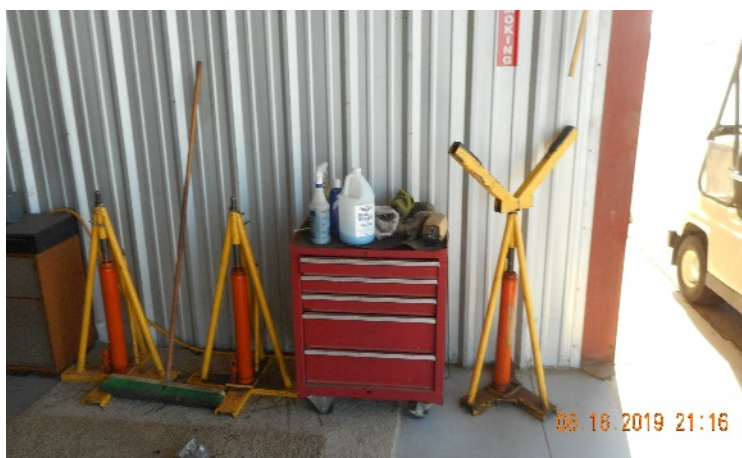


PICTURE OF LEROY CASTLES STITS PLAYMATE WITH IT'S WINGS FOLDED.

FOR SALE PAGE 2

FROM DEE GRIMM

NANCHANG CJ6A • \$140,000 • **FOR SALE** • N620DM, Very nice CJ6A, maintained by A&P owner; cockpits detailed; TTAF 5030 hrs; TSMOH on Vedeneyev M14P 272 hrs-bottom end overhauled by M14P; TTS NEW Whirlwind 400C-M14 carbon fiber prop 272 hrs; dual nav-comms with glide slope, GPS, ADS-B out; current IFR certification; many modifications; based Deer Valley Airport Phoenix; offer includes set of custom hydraulic jacks, modified trailer to move CJ6, metric tools, 2 current parachutes, 2 headsets, system and flight checkout included. Contact Dee Grimm • Owner - located Phoenix, AZ, United States • Telephone: cell/text 602-312-7307 • 602-996-1296



***** DISCLAIMER *****
 The performance specification database contains performance and dimensional data for a large variety of production and homebuilt aircraft. The values portrayed here are from manufacturers' data and are not representative of any particular aircraft being advertised.

NANCHANG CJ-6A

# of Engines: 1	Range: 425 mi 369 nmi 683 km
Engine Make: ZHOZHOU HUOSAI	Service Ceiling: 20,500 ft 6,248 m
Engine Model: HS-6A	Rate of Climb: 2,700.00 ft/min 13.72 m/s
Engine Power: 285 hp 212 kW	Wingspan: 33.50 ft 10.21 m
Recorded TBO: N/A	Length: 27.90 ft 8.50 m
Standard Fuel: 60.00 gal 227.12 L	Height: 10.80 ft 3.29 m
Max Fuel: 60.00 gal 227.12 L	Empty Weight: 2,414 lbs 1,094 kg
75% Cruise: 185 mph 160 kts 297 km/h 0 Mach	Gross Weight: 3,086 lbs 1,399 kg
Stall: N/A mph N/A kts N/A km/h	

	Normal	Over 50 Foot Obstacle	
Takeoff	N/A ft N/A m		N/A ft N/A m
Landing	N/A ft N/A m		N/A ft N/A m

PRICE:
\$140,000 USD

Get Immediate Financing
 For simple and secure financing, click here.

SALE STATUS: For Sale
 YEAR: 1969
 MAKE/MODEL: NANCHANG CJ-6A
 REGISTRATION #: N620DM
 SERIAL #: Not Listed
 LOCATION: Phoenix DVT, AZ USA

PERFORMANCE SPECS

SAVE COMPARE

Dee Grimm
 (602) 312-7307

FOR SALE PAGE 3

My friend Cora Lee in Del Norte , Colorado lives on the airport at KRCV East slope of the rockies East of Wolf Creek pass. Astronaut Kent Rominger airport.

She is selling her airport hangar, paved taxiway.. Metal, concrete floor, power. 42' by 30' with a motor operator pull up hinged folding door. Right now I think her price is around \$65,000. Her number is 719 - 657 - 0846. If anyone has any other questions or can't get hold of her they can call me .

Rodney at 623-640-4704

Leave a message due to robocalls.



NEWS FROM PAUL FISHER

I got the Empennage/Tail Kit kit for my RV-12, so I have officially started my build. I am using the EAA builders log system for my build.



AIRCRAFT LEARN BUILD !



FOR SALE PAGE 4

**INCOMPLETE THALMAN 4, WOOD, METAL, FIBERGLASS
CONTACT CURT CURTIS - EMAIL - CURTCURTIS@Q.COM**

PRICE

= FREE



AIRPORT-DATA.COM Ronald Barker [Log in](#) [New user?](#) [Sign up for free](#)
[Tell a Friend](#)

Home Airport ▾ Aircraft ▾ Photographers Slideshows Articles Forums Member Section API

Aircraft N53389 Data

[Browse by Manufacturer](#)

1 aircraft record found.

[1949 Thalman T - 4](#)

[Add another N53389](#)

N53389

1949 Thalman T - 4 C/N 4

[Discuss this aircraft in forum](#)

Have a photo of this aircraft? Share with others.
Correct or submit additional aircraft data
[Comment on this aircraft](#)
[Links to this page and other related pages](#)

Airframe Info

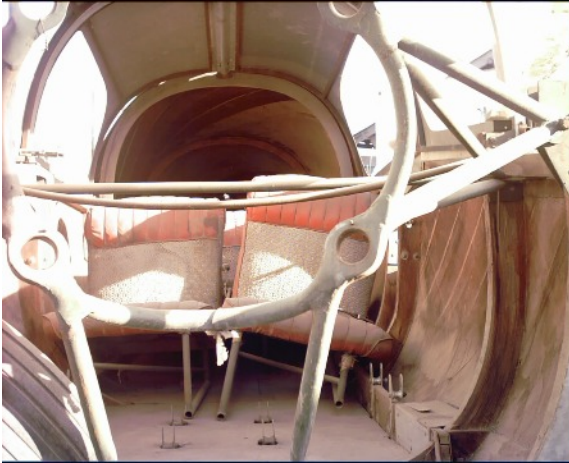
Manufacturer: Thalman
Model: T - 4 Search all Thalman T - 4
Year built: 1949
Construction Number (C/N): 4
Aircraft Type: Fixed wing single engine
Number of Seats: 2
Number of Engines: 1
Engine Type: Reciprocating
Engine Manufacturer and Model: Lycoming O-340 SERIES

Aircraft

Registration Number: N53389
Mode S (ICAO24) Code: A6BF24
Certification Class: Experimental
Last Action Taken: 1977-01-14
Current Status: Revoked

T-4 1953 = 4pChwM rg (manual); 135 hp Lycoming O-290; span: 40'0" load: 1050# v: 175/155/45 range: 700. All-wood geodetic construction. [N53389]. Later converted to T-tail with 170 hp O-340. Price FREE.

FOR SALE PAGE 5



Price FREE



FOR SALE PAGE 6

ADDITIONAL ITEMS FOR SALE FROM CURT CURTIS

These shelves are listed on craigs list at \$60. They are free to a club member. Also a two pedestal desk and a metal work bench. the shelves 18 in. wide 3 sections for a total of 9 ft. long. contact CURT 602 809 4446. PRICE = FREE

I have some instruments and landing gear legs, plus wheels. I'm asking \$100 for each. but i need to send the message that they are for sale at any price. They need a home. Also I have some wheels and stuff.



FOR SALE PAGE 6

RV-6A S/N 60271 SPECS & DETAILS. Please contact **Ed Daror via email : 72ae@cox.net.**

Aircraft built by owner A&P/IA and Flight Tested and FAA certified as N72AE In January 2003 for Day, Night, VFR, IFR operations at 1800 Lbs. Gross Aircraft Weight for Normal and 1400 Lbs.

Aerobatics. Present Aircraft, Engine and Propeller Total Time in Service since new: 212 Hours.

ENGINE : Lycoming Factory new 0-360-A1A 180 H.P. with Slick Electronic Ignition.

PROPELLER: Hartzell Constant Speed factory new Model HC-C2YK-1BF / F766A-4.

AVIONICS: Garmin GNC 300XL GPS/COM and ILS Indicator and a function unit, Narco 12D+ Nav/ Com and an ILS Indicator, Narco AT 150 Transponder, Garmin GMA 240 Audio Panel/Intercom,

UAvionix ADS-B Out Bundle. All with separate antennas. EILT with remote Switch/indicator.

Autopilot: NAVAID Tru-Track coupled to GPS.

COMPASS: Vertical. FLAPS: Electrical. PITOT TUBE: Heated. Landing Lights: Dual. Wing Strobes: dual.

CARBURATOR: Temperature Gauge, THROTTLE, PROP, MIXTURE controls: Vernier type, Cabin

HEATER and ventilation controls, AEROBATIC HARNESS: Hooker 6 point on both seats, STEPS: on

both sides.

INSTRUMENTS: All with internal

controllable illumination. NOSE WHEEL:

Improved Bearings by Splats

recently installed. BRAKES: Cleveland

dual sides. AIRCRAFT CONTROLS: Stick

type with Mike buttons.

This aircraft has and is always hangered at

DVT in Phoenix, AZ. Engine is protected

with preservative. Aircraft is presently

Airworthy. ALL Van's Aircraft Service

Bulletins complied at last annual

CONDITION INSPECTION on May 12th,

2021. ADS- B needs to be rechecked in

flight with FAA- ATC procedure.



AIRPORT OF THE MONTH - FALCON FIELD, MESA

The screenshot shows the Mesa, AZ website homepage. At the top, there are navigation links for Residents, Things To Do, Business, and Government, along with the mesa·az logo and a search icon. The main banner features a stylized portrait of Martin Luther King Jr. on the left and the text "I HAVE A DREAM MARTIN LUTHER King day 2021 Virtual Celebration" on the right. Below the banner, there are four service tiles: My Utility Account, Court, Jobs, and Parks. A vertical "I Want To" button is visible on the right side of the banner.

History

The history of Mesa dates back at least 2,000 years to the arrival of the [Hohokam](#) people. The Hohokam, whose name means "All Used Up" or "The Departed Ones," built the original canal system. The canals were the largest and most sophisticated in the prehistoric New World. Some were up to 90 feet (27 m) wide and 10 feet (3.0 m) deep at their head gates, extending for as far as 16 miles (26 km) across the desert. By A.D. 1100 water could be delivered to an area over 110,000 acres (450 km²), transforming the Sonoran Desert into an agricultural oasis. By A.D. 1450, the Hohokam had constructed hundreds of miles of canals many of which are still in use today.

After the disappearance of the Hohokam and before the arrival of the early settlers little is known, as explorers did not venture into this area. By the late 19th century near present-day Mesa, [U.S. Army](#) troops relocated the [Apache](#), opening the way for settlement.

[Mormon pioneer Daniel Webster Jones](#), with Henry Clay Rogers as his right-hand man, left [St. George](#), Utah in March 1877. Jones had been asked by Mormon officials to direct a party of people in establishing a settlement in Arizona. They traveled south and settled on the north side of the present Mesa area. This settlement was initially known as Fort Utah and later as Jonesville. It was located about where Lehi Road is now. In 1883 it was named [Lehi](#) at the suggestion of [Brigham Young, Jr.](#)

About this same time, another group dubbed the First Mesa Company arrived from Utah and Idaho. Their leaders were named Francis Martin Pomeroy, Charles Crismon, George Warren Serrine and Charles I. Robson. Rather than accepting an invitation to settle at Jones' Lehi settlement, they moved up onto the [mesa](#) that serves as the city's namesake. They dug irrigation canals and used some of the original Hohokam canals. By April 1878, water was flowing through them. The Second Mesa Company arrived in 1879 and settled to the west of the First Mesa Company because of more available farmland. This settlement was called originally called Alma and later Stringtown. It was located about where Alma School Road is now.

On July 17, 1878, Mesa City was registered as a 1-square-mile (2.6 km²) townsite. The first school was built in 1879. In 1883, Mesa City was [incorporated](#) with a population of 300 people. Dr. A. J. Chandler, who would

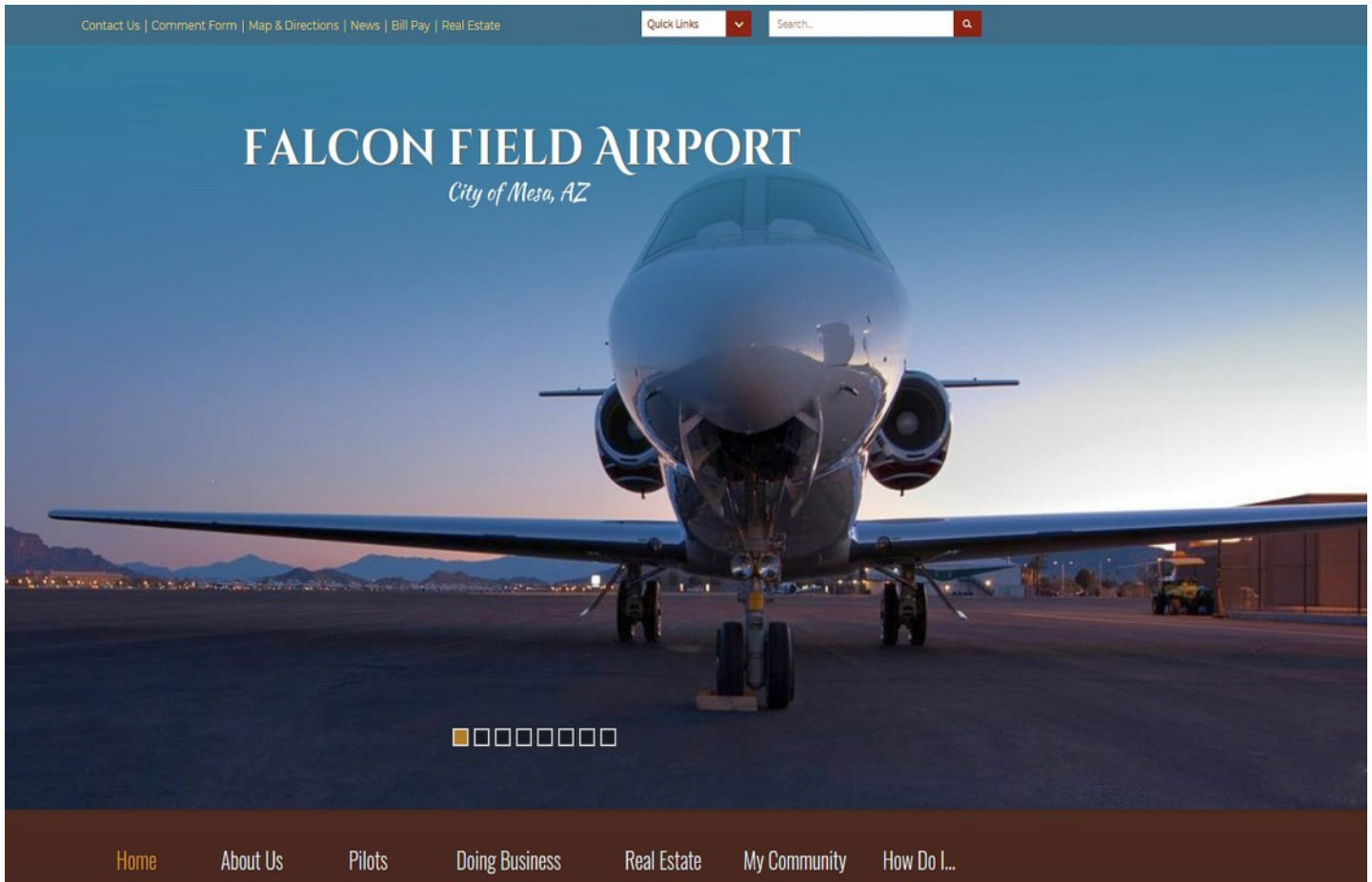
AIRPORT OF THE MONTH - FALCON FIELD, MESA CONTINUED

HISTORY CONTINUED

later go onto found the [city of Chandler](#), worked on widening the Mesa Canal in 1895 to allow for enough flow to build a power plant. In 1917, the city of Mesa purchased this utility company. The revenues from the company provided enough for capital expenditures until the 1960s. During the [Great Depression](#), [WPA](#) funds provided paved streets, a new hospital, a new town hall and a library.

After the founding of the city the elected official that most impacted the municipality was [George Nicholas Goodman](#). He was mayor 5 different times in parts of 3 different decade (1938–1942, 1946–1948, 1952–1956) (see: [List of mayors of Mesa, Arizona](#)). As mayor he was directly involved in the process of acquiring land for both [Falcon Field](#) and [Williams Field](#).

With the opening of [Falcon Field](#) and [Williams Field](#) in the early 1940s, more military personnel began to move into the Mesa area. With the advent of [air conditioning](#) and the rise of tourism, population growth exploded in Mesa as well as the rest of the Phoenix area. Industry—especially early aerospace companies—grew in the 1950s and 1960s. As late as 1960, half of the residents of Mesa made a living with agriculture, but this has declined substantially as Mesa's suburban growth continued on track with the rest of the Phoenix metro area.



AIRPORT OF THE MONTH - FALCON FIELD, MESA CONTINUED

- Falcon Field Airport History
- Airport Facts
- Historic Photo Wraps
- Documents & Forms
- News Room
- Events
- Useful Links
- Maps & Directions
- ▶ Contact Us
- Capital Improvement Program

About Us

Font Size: [+](#) [-](#) [Share & Bookmark](#) [Feedback](#) [Print](#)



ABOUT FALCON FIELD

In the heart of Arizona in the Phoenix metropolitan area, Falcon Field is a general aviation airport owned and operated by the City of Mesa. Located in northeast Mesa, Falcon Field is minutes from hotels & luxury resorts, major league spring training baseball, outdoor recreation, entertainment, shopping, Arizona State University, and other metro area cities.

Falcon Field serves as a reliever to Phoenix Sky Harbor International and Phoenix-Mesa Gateway airports, the region's two commercial service hubs. It is convenient to three major freeways, including the Loop 202 Red Mountain Freeway, the 101 Freeway north-south corridor, and Highway 60 Superstition Freeway east-west corridor.

Airport Assets

Falcon Field Airport is committed to providing the public a valuable air transportation resource and enhancing the aeronautical industry in the community. It is known as a safe, friendly airport and takes pride in its unique history. With more than 300,000 operations annually, Falcon Field consistently ranks among the top five most active general aviation airports in the U.S.

- More than 800 based aircraft.
- Two runways of 5,100 and 3,800 feet accommodate a wide variety of fixed-wing aircraft and helicopters.
- FAA air traffic control tower.
- Fixed-base operator provides competitive fuel prices and pilot services.
- National car rental office located on-airport.
- More than 100 on-airport businesses provide aviation services – fueling, maintenance and repairs, inspections, avionics, aircraft painting and aircraft interiors – to support aircraft operations, manufacturing, or research & development activities.
- More than 40 acres are available on-airport for aviation-related development with direct runway/taxiway access.
- Falcon Field Airport is ideal for aircraft components/systems manufacturing; aircraft/helicopter maintenance, repair and overhaul uses; aircraft restoration; aircraft testing; aircraft sales; corporate aviation departments; and fixed-base operators.
- Variety of unique hangar facilities available to fit business needs.
- With helipad's and nearby desert areas for practice maneuvers, Falcon Field is ideal for helicopter operations and manufacturing.
- Aircraft charters, recreational, sight-seeing and photography flights, and flight instruction are offered by multiple on-airport businesses.
- Near-perfect flying weather with 325+ days of sunshine annually
- Highly competitive, business friendly lease terms.
- Surrounding 1,000-acre business district offers a wide range of affordable options. Available properties can accommodate the smallest start-up to an industry leader requiring thousands of square feet. Six industrial parks are located throughout the district, creating an ideal environment for small to large manufacturing and commercial enterprises.

AIRPORT OF THE MONTH - FALCON FIELD, MESA CONTINUED



- Airports
- Nav aids
- Airspace Fixes
- Aviation Fuel
- Hotels
- AIRBOSS
- iPhone App
- My AirNav

KFFZ Falcon Field Airport
Mesa, Arizona, USA

GOING TO MESA?



FAA INFORMATION EFFECTIVE 31 DECEMBER 2020

Location

FAA Identifier: FFLZ
 Lat/Long: 33-27-39.0260N 111-43-41.9710W
 33-27.650433N 111-43.699517W
 33.4608406, -111.7283253
 (estimated)
 Elevation: 1394 ft. / 424.9 m (surveyed)
 Variation: 12E (1990)
 From city: 5 miles NE of MESA, AZ
 Time zone: UTC -7 (year round, does not observe DST)
 Zip code: 85215

Airport Operations

Airport use: Open to the public
 Activation date: 12/1941
 Control tower: yes
 ARTCC: ALBUQUERQUE CENTER
 FSS: PRESCOTT FLIGHT SERVICE STATION
 NOTAMs facility: FFLZ (NOTAM-D service available)
 Attendance: CONTINUOUS
 FOR SVC CTC FBO ON 122.950 (480-832-2582).
 Pattern altitude: 2702 ft. MSL
 TPA FOR LIGHT ACFT 1006 FT AGL, TPA FOR LARGE & TURBINE-POWERED ACFT 1506 FT AGL, TPA 506 FT AGL FOR ROTORCRAFT.
 Wind indicator: lighted
 Segmented circle: yes
 Lights: WHEN ATCT CLSD MRL RY 04R/22L AND TWY LGTS PRESET LOW INTST TO INCREASE INTST ACTVT - 124.6. MRL RY 04L/22R UNAVBL WHEN ATCT CLSD. FOR REIL RYS 04R & 22L CTC ATCT.
 Beacon: white-green (lighted land airport)
 Operates sunset to sunrise.

Airport Communications

CTAF: 124.6
 UNICOM: 122.95
 ATIS: 118.25
 WX ASOS: PHONE 480-641-4111
 FALCON GROUND: 121.3 [MAY 15-AUG 15 1230-0400Z, AUG 16-MAY14 1300-0400Z]
 FALCON TOWER: 124.6 [MAY 15-AUG 15 1230-0400Z, AUG 16-MAY14 1300-0400Z]
 PHOENIX APPROACH: 120.7
 PHOENIX DEPARTURE: 120.7
 BLYTHE STAR: 124.1
 DSERT STAR: 120.7
 HUUTY STAR: 124.9
 JCOBS STAR: 120.7
 WX AWOS-3 at IWA (10 nm S): 133.5 (480-988-9428)
 WX AWOS-3PT at CHD (12 nm S): 128.325 (480-814-9952)
 WX ASOS at SDL (13 nm NW): PHONE 480-483-3049
 WX ASOS at PHX (14 nm W): PHONE 602-231-8557

• EMERG FREQ 121.5 NOT AVBL AT ATCT.

Nearby radio navigation aids

VOR radial/distance	VOR name	Freq	Var
IWA r325/10.2	WILLIE VORTAC	113.30	13E
PXR r070/12.2	PHOENIX VORTAC	115.60	12E
TFD r003/35.7	STANFIELD VORTAC	114.80	12E

NDB name	Hdg/Dist	Freq	Var	ID
CHANDLER	007/12.3	407	12E	CHD - - - - - -

Airport Services

Fuel available: 100LL JET-A1+
 Parking: tiedowns
 Airframe service: MAJOR
 Powerplant service: MAJOR
 Bottled oxygen: HIGH/LOW
 Bulk oxygen: HIGH/LOW

AIRPORT OF THE MONTH - FALCON FIELD, MESA CONTINUED

Runway Information

Runway 4R/22L

Dimensions: 5100 x 100 ft. / 1554 x 30 m
 Surface: asphalt, in good condition
 Weight bearing capacity: Single wheel: 38.0
 Double wheel: 60.0
 Double tandem: 90.0
 Runway edge lights: medium intensity
RUNWAY 4R
 Latitude: 33-27.353998N
 Longitude: 111-44.045217W
 Elevation: 1365.6 ft.
 Traffic pattern: left
 Runway heading: 039 magnetic, 051 true
 Markings: nonprecision, in good condition
 Visual slope indicator: 4-light PAPI on left (4.00 degrees glide path)

RUNWAY 22L
 33-27.881167N
 111-43.263647W
 1394.0 ft.
 right
 219 magnetic, 231 true
 nonprecision, in good condition
 4-light PAPI on left (4.00 degrees glide path)
 PAPI DOES NOT PROVIDE OBSTRUCTION CLEARANCE BEYOND 4.0 NM FROM THRESHOLD.
 yes
 yes, no lights
 12 ft. road, 560 ft. from runway, 290 ft. right of centerline, 30:1 slope to clear

Runway end identifier lights: yes

Touchdown point: yes, no lights

Obstructions: 8 ft. road, 420 ft. from runway, 270 ft. left of centerline, 27:1 slope to clear

Runway 4L/22R

Dimensions: 3799 x 75 ft. / 1158 x 23 m
 Surface: asphalt, in good condition
 Weight bearing capacity: Single wheel: 12.5
 Runway edge lights: medium intensity
RUNWAY 4L
 Latitude: 33-27.498027N
 Longitude: 111-44.051035W
 Elevation: 1365.7 ft.
 Traffic pattern: left
 Runway heading: 039 magnetic, 051 true
 Markings: basic, in good condition
 Visual slope indicator: 2-light PAPI on left (4.00 degrees glide path)

RUNWAY 22R
 33-27.890962N
 111-43.468963W
 1386.0 ft.
 right
 219 magnetic, 231 true
 basic, in good condition
 2-light PAPI on left (4.00 degrees glide path)
 yes
 yes, no lights
 8 ft. road, 400 ft. from runway, 270 ft. right of centerline, 25:1 slope to clear

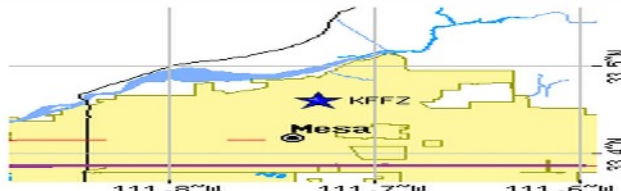
Runway end identifier lights: yes

Touchdown point: yes, no lights

Obstructions: 9 ft. road, 380 ft. from runway, 275 ft. left of centerline, 20:1 slope to clear

Airport Ownership and Management from official FAA records

Ownership: Publicly-owned
 Owner: CITY OF MESA
 BOX 1466
 MEZA, AZ 85211-1466
 Phone 480-644-2444
 Manager: CORINNE NYSTROM
 4800 E. FALCON DR.
 MESA, AZ 85215
 Phone 480-644-2450



Road maps at: [MapQuest](#) [Bing](#) [Google](#)

Aerial photo

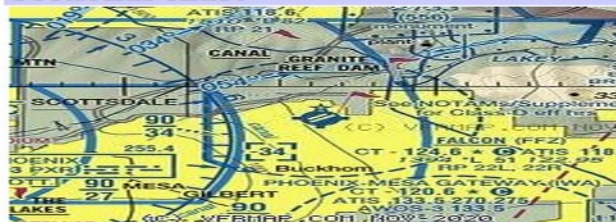
WARNING: Photo may not be current or correct



Photo courtesy of Maricopa County (AZ) Assessor's Office
 Taken in August 2013
 looking north.

Do you have a better or more recent aerial photo of Falcon Field Airport that you would like to share? If so, please [send us your photo](#).

Sectional chart



***AIRPORT OF THE MONTH - FALCON FIELD, MESA CONTINUED
THINGS TO DO IN MESA***

25 Best Things To Do In Mesa (AZ):

- Hohokam Stadium: [Flickr](#)
- Orange Patch – Mesa: [dragonflyventures](#)
- Sloan Park: [mlb.com](#)
- Mesa Arts Center: [wikipedia](#)
- Organ Stop Pizza: [flickr](#)
- Mesa Amphitheatre: [dannyzeliskopresents](#)
- Mesa Arizona Temple: [lds](#)
- Golfland and Sunsplash: [golfland](#)
- Arizona Museum for Youth: [eastvalleymomguide](#)
- Commemorative Air Force Airbase Arizona: [youtube](#)
- Mesa Historical Museum: [wikipedia](#)
- hot air balloon ride: [mesahotairballoons](#)
- Arizona Museum of Natural History: [wikipedia](#)
- Rockin' R Ranch: [rockinrranch](#)
- Mesa Grande Ruins: [wikipedia](#)
- Brinton Desert Botanical Garden at Park of the Canals: [dragonflyventures](#)
- Wind Cave Trail: [hikearizona](#)
- Mesa Community College Rose Garden: [haveteacupwilltravel](#)
- Downtown Mesa: [Flickr](#)
- Public Art: [mesaaz](#)
- Mexican Food: [casadepicoblog](#)
- Superstition Springs Centre, Mesa: [visitmesa](#)
- Salt River Tubing: [azcentral](#)
- US 60: [Youtube](#)
- Landmark Restaurant – Mesa: [azeats](#)



AIRPORT OF THE MONTH - FALCON FIELD, MESA CONTINUED

Pictures of Things to do in Mesa

Top Attractions in Mesa

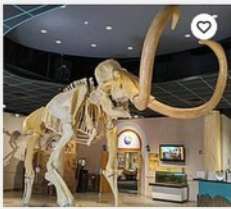
Sort by: **Traveler Favorites**



NATURE & PARKS
1. Usery Mountain Regional Park
●●●●● 616 reviews



MUSEUMS
2. Commemorative Air Force Museum
●●●●● 555 reviews



MUSEUMS
3. Arizona Museum of Natural History
●●●●● 355 reviews

See 1 Experience



SIGHTS & LANDMARKS
4. Organ Stop Pizza
●●●●● 593 reviews



5
SIGHTS & LANDMARKS
Organ Stop Pizza
●●●●● 537 reviews



6
SHOPPING
Mesa Market Place Swap Meet
●●●●● 747 reviews



7
NATURE & PARKS
Riverview Park
●●●●● 104 reviews



8
CONCERTS & SHOWS
Silver Star Theater
●●●●● 170 reviews



9
NATURE & PARKS
Rose Garden at Mesa Community College
●●●●● 74 reviews



10
SIGHTS & LANDMARKS
Hohokam Stadium
●●●●● 134 reviews

A THANK YOU TO FRED KIRKLAND FOR THIS ARTICLE ABOUT THE STITTS-BLESLER EXECUTIVE AIRPLANE.

Last month's newsletter contained a blurb on LeRoy Castles Stitts Playmate . I have always admired anything Stitts. The reason is my very early exposure to a one of a kind Stitts designed and built airplane. See if you recognize this airplane. This is the precursor to the Stitts Playmate.



It is the Stitts-Besler Executive. This airplane was built on a handshake deal between Ray Stitts and William (Bill) Besler, the son of another notable aviator, William Besler Sr. (You can learn more about the Besler steam powered aircraft at this URL: <https://www.wingsofhistory.org/what-about-steam/>) The intent of the deal between Stitts and Besler was that Besler was to build a steam engine to power the Executive.

The Bill Besler's business made and sold turbine irrigation water pumps. My father was the owner of a water well drilling company that at the time was in Farwell, TX. My father sold Besler turbine pumps to local farmers when he drilled a well or replaced an older pump with the more efficient turbine pump. My connection to the Executive follows a path of father to son.

Bill Besler owed my father commissions on the sale of pumps. He invited my father to see his production facility in California and my father took him up on the offer. Dad flew his Piper Tri-Pacer to Flaybob airport in Riverside where Besler was to meet him. In the course of this event my father met Ray Stitts and learned of the Executive. Dad was enamored with the idea of a folding wing plane that could be towed behind a car if necessary. Long story short; Dad accepted the Executive in payment of the commissions owed to him by Besler.

I spoke with Ray before he died about the plane and he sent me several pictures of the plane of which the one above was included. In the absence of the steam engine Besler never provided, Ray chose the venerable Lycoming O-320 to finish out the plane. My father later told me that he wished it had been an O-360 but performance with the O-320 was acceptable. Below is a picture of the plane after my father became the owner. That's him in the plane and me standing next to him on the wing. The others are my or my father's brothers.

There are some things to notice by looking at the two pictures above. First, note on the tail of the plane in the first picture that there were two horizontal stripes on the Vertical stabilizer and rudder with the words "Stitts-Besler Executive". On the second, these are gone. Also, the first picture shows that there was at one time a Piper Cub like landing gear but in the second picture there is a Wittman spring gear. Ray said that he met Steve and determined that the Wittman gear was better suited for the Executive. The third thing to notice is the N-number; more on that later.

There are many anecdotal stories about this airplane. Like, it was a three seat plane with a seat that was transverse to the two front seats. This seat could be easily removed to use as a baggage compartment. My father installed a bench type single belt from one side of the cabin to the other and my two brothers and I

THE STITTS-BLESLER EXECUTIVE AIRPLANE. CONTINUED

would stand behind the seats strapped to the bulkhead. We would do this occasionally to fly to our grandparents place near Littlefield, Tx. on Sunday morning in time to land on the Farm-To-Market (FTM) road that ran in front of the church. We would taxi into the church parking lot before others arrived, get out and fold

the wings,
and walk to
my
grandparents'
house that
was right next
to the church.
There were
always
interested
people around
when church
service was
over and Dad
would give
them rides
before we
would head
back home.
Another time,
my father
landed on a
FTM road
outside



Farwell and

folded the wing on the pilot side and then proceeded to taxi the plane into town and to his business shop. On the way into town my father misjudged the wing clearance and hit a mailbox knocking a dent in the leading edge that he had to then repair. The shop only had a one car garage door but was big enough inside to fold both the wings down. Allot of people noticed the plane but who didn't know the wings folded would ask Dad, "How are you going to get thing out of there?"

Another instance of a notable event was when my oldest brother and Dad were flying and the oil pump failed (more on the oil pump later). Dad put down in a corn field which poked numerous holes in the belly fabric and under the wings. Ray Stitts provided Dad with all the materials to repair the plane.

The plane cruised at 130 mph but landing speed was just below 80 mph. Landing on firm surfaces didn't really bother Dad but landing that fast in a corn field didn't sit well with him and he decided to sell the plane and buy a Maule Rocket. Someone from Riverside who knew the plane through Stitts bought it taking it back to California where the plane's life ended. According to Ray, the new owner also lost the oil pump in flight and put down in the desert and was less fortunate than Dad. The owner put the plane on its back in a ravine destroying the plane beyond repair.

I asked Ray if there were any plans for the airplane with visions of building another one. Ray told me because of legal issues related to the partnership on the plane with Besler, he couldn't distribute plans for the plane. He did say that he could use the unique folding wing system he designed for the Executive and this became a feature of the Playmate.

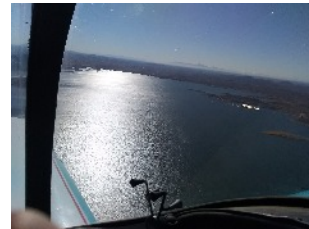
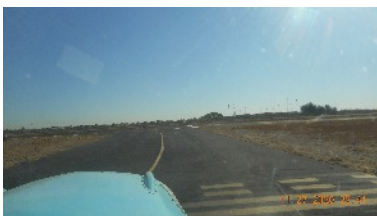
I mentioned that I had visions of building an Executive however since it was not to be, I chose to build my own design from a set of plans for the Spacewalker that I got from Jesse Anglin. Meet the Lil'Texan.

THE STITTS-BLESLEER EXECUTIVE AIRPLANE. CONTINUED

My hope was to obtain the N-number (N36K) for my homebuilt. Unfortunately, the N-number was not available however N36FK was which was fortuitous since my initials are FK. Guess what! The Lil'Texan had folding wings. For many years I kept it at home in the garage and would tow it to the airport to fly pretty much every week until I moved to Phoenix. The wing was all wood and not long after moving here the wing began to delaminate. I was finishing a Kitfox 5 at the time so I decertified the Lil'Texan and sold it as salvage to a man from Las Vegas. I'm currently in the final assembly stage of a second Kitfox 5. Reading about the Playmate in the chapter newsletter made me remember the unique relationship I've experienced with Ray Stitts and what I consider to be one of his best designs.

ALEX AND TAD GO SIGHT SEEING

Saturday November 28 about 10:00 A.M. Tad started his preflight explaining what he was looking for while making a complete circle around the airplane. We started up his Encoupe, let it warm-up some and after clearance from the airport headed down the taxi way to the run up area. We were third in line. Upon take off we headed North to our first destination Pleasant Lake. We did a 180 turn and headed back across town to the Avondale/Phoenix NASCAR track. Then it was back to the airport. The weather was sunny and the ride smooth. I hope you enjoy some of the pictures I took.
Alex Bodak.



NOTICE NOTICE NOTICE NOTICE NOTICE

Starting In January or January, I will be putting our membership online with EAA .Chapter Roster Management Goal: Make it easier for you to run your chapter.

As a chapter officer, you need to know who is a current member and if your membership is stable, declining, or growing. Your overall paid membership number is the number one indicator of your chapter’s health. Without this information readily available, you are flying blind.

EAA’s Chapter Roster Management website was specifically designed to provide you with an easy way to track your membership and share that info with other chapter leaders.

Benefits of this application:

One source of "truth" as to who is a member and it is Free to chapters!

Accessible by those who need it, when they need it

Get to know your members/Add photos of your members

Help your new members get to know you with a sharable roster

Provides which of your members are current EAA members

Know which of your members have completed EAA’s Youth Protection Policy

The program has a place for pictures of members so an office can print a picture/name list.

Update your Information and a picture by sending it to either John Gregg or Alexander Bodak. Thanks.

The screenshot displays the 'Required Fields' section of the EAA Member Search and Maintenance website. At the top, there are navigation buttons for 'Home', 'Member Search', and 'Change Password'. Below this is the 'EAA Member Search' section with a note: 'NOTE: To Display all records, leave the form blank and Press the "Search" button.' The search interface includes fields for 'First/Nickname', 'Last Name', 'Record Status' (set to 'Active'), 'Member Type', and 'Current Status'. There are also buttons for 'Search', 'Reset', 'Results To Excel', 'Results To Word', and 'Add a new Person!'. A summary box on the right shows 'Current Members:', 'Expired Members:', and 'New Members:'. Below the search section is the 'EAA Member Maintenance' section with 'Add This Person' and 'Close' buttons. The main form contains numerous fields: 'First Name' (Required), 'Last Name' (Required), 'Nickname', 'Spouse/Other', 'Gender', 'EAA #', 'EAA Expiration', 'Member Type' (Required), 'Status' (Active), 'Web Admin Access' (Required), 'Address 1', 'Address 2', 'City', 'State', 'Zip Code', 'Country', 'Birth Date', 'Joined' (11/30/2019), 'Expire Date' (Required), 'Other Info', 'Home Phone', 'Cell Phone', 'Email', 'License/Ratings/Skills', 'Aircraft Owned', 'Aircraft Project', 'Aircraft Built', 'Participation' (IMC, VMC), 'Young Eagles' (Pilot, Volunteer), 'Youth Protection', 'Background Check', and 'Eagle Flight' (Pilot, Volunteer).

THANK YOU**THANK YOU****THANK YOU****THANK YOU****THE FOLLOWING IS A LIST OF PEOPLE WHO HAVE GENEROUSLY DONATED TO THE HANGAR FUND. WILL YOU JOIN THEM?**

- | | |
|----------------------------------|---------------------|
| 1. Aaron Andrew | 29. Roy Hendrickson |
| 2. Benjamin Armstrong | 30. Steve Thompson |
| 3. AZ Aeroservices - Jack Norris | 31. Mark Pansing |
| 4. Anna Berry | 32. Jack Norris |
| 5. John Bishop | 33. Fred Kirkland |
| 6. Alexander Bodak | 34. Cheri McGunagle |
| 7. Tad Daughters | 35. Roger Ward |
| 8. John Gregg Jr. | 36. George Parkins |
| 9. Darren Henley | 37. Michael Hauser |
| 10. Carlos Hernandez | 38. Richard Schmidt |
| 11. Michael Karazewski | 39. John Robinson |
| 12. Mary Kelly | 40. Mark Robinson |
| 13. Jamie Marie | 41. Cheri McGunagle |
| 14. Micah Martin | 42. Mark Johnson |
| 15. Lori Massuer | 43. Michael Hauser |
| 16. Jim Moss | 44. Scott Davis |
| 17. Mark Pansing | 45. Paul Fisher |
| 18. Frank Rivera | 46. |
| 19. John Roffey | 47. |
| 20. Chris Rute | |
| 21. Stuart Snow | |
| 22. Sold donated items | |
| 23. Steve Thompson | |
| 24. Katie Velvick | |
| 25. Tom Velvick | |
| 26. John Warner | |
| 27. Dawn Young | |
| 28. Chuck Kline | |

**SEND US SOME MONEY AND
YOUR NAME WILL BE HERE
ALSO!**

Check the Website at <https://chapters.eaa.org/ea538/hangar-fundraiser> for more information and updates.

IF I MISSED ANYBODY, YOU WILL APPEAR IN NEXT MONTH'S NEWSLETTER. AGAIN THANKS FOR GETTING US CLOSER TO OUR GOAL OF OUR OWN HANGAR/HOME..

FROM EAA HEADQUARTERS HOMEBUILDERS WEEK

EAA | Aviation Interests | Homebuilders

Homebuilders

- Getting Started & Building
- Training
- Programs
- Frequently Asked Questions
- Kits & Plans
- Experimenter
- EAA Amateur-Built Aircraft Safety Pledge
- 2018 One Week Wonder
- 2014 One Week Wonder
- Video
- Discussion Forum
- At AirVenture

HOMEBUILDERS

The world of homebuilt aircraft — officially known in the United States as Experimental Amateur-Built Aircraft — has existed as long as powered flight. Even the Wright brothers were homebuilders, since they didn't rely on a factory to construct their airplanes. They, like the homebuilders of today, used their own abilities and craftsmanship to construct safe and efficient flying machines.

Today, tens of thousands of homebuilt aircraft fly throughout the world. A significant number of homebuilt aircraft have flown around the globe and one, the Voyager in 1986, was the first airplane ever to fly around the world non-stop on a single tank of fuel.

Experimental amateur-built aircraft, often called "homebuilts" because they are typically built in people's garages and basements, are the fastest growing segment of new aircraft in the United States. Amateurbuilt aircraft are built by individuals and certificated by the Federal Aviation Administration (FAA) as "experimental amateur-built" (E-AB).

EAA was founded in 1953 by a group of airplane enthusiasts mostly comprised of airplane builders, although anyone with an aviation interest has always been welcome in the organization. EAA has been the organization of record as the homebuilt movement moved from simple, single-place tube-and-fabric airplanes 60 years ago to today's wide spectrum of aircraft that feature plans- and kit-built models. No matter the airplane project, one thing remains constant – homebuilt aircraft provide a path where nearly anyone can pursue their personal dream of flight.

Download EAA's Intro to Homebuilding Sourcebook

EAA's extensive resources, available through the EAA members' area or the association's staff, can help any aircraft builder or restorer to create a safe, efficient aircraft that provides recreation and education.

FROM EAA HEADQUARTERS HOMEBUILDERS WEEK CONTINUED



EAA Homebuilders Week Schedule

Join us on **January 26-30, 2021**, for EAA Homebuilders Week! The full schedule of events is detailed below, where you can click the presentation title to register.

All presentation times are listed in Central Standard Time.

TUESDAY, JANUARY 26, 2021

1 p.m. - 2:15 p.m.	Building An Aircraft – What You Need To Know Presenter: Charlie Becker Company: EAA
2:30 p.m. - 3:45 p.m.	Sheet Metal Basics <i>Qualifies for FAA WINGS and AMT credit.</i> Presenter: Mark Forss Company: EAA SportAir Workshops
4 p.m. - 5:15 p.m.	Homebuilt Safety <i>Qualifies for FAA WINGS credit.</i> Presenter: Ron Wanttaja Company: Aviation Author

5:30 p.m. - 6:45 p.m.	Composite Construction Basics <i>Qualifies for FAA WINGS and AMT credit.</i> Presenter: Mark Forss Company: EAA SportAir Workshops
-----------------------	---

7 p.m. - 8:15 p.m.	Kit Selection Presenter: Paul Dye Company: Kitplanes
--------------------	--



WEDNESDAY, JANUARY 27, 2021

1 p.m. - 2:15 p.m.	Panel Planning & Wiring Presenter: Marc Ausman Company: Aviation Author
2:30 p.m. - 3:45 p.m.	Zenith Aircraft Kits & Plans Presenter: Sebastien Heintz Company: Zenith Aircraft
4 p.m. - 5:15 p.m.	Buying A Used Homebuilt Presenter: Vic Syracuse Company: Base Leg Aviation
5:30 p.m. - 6:45 p.m.	Garmin Experimental Avionics Solutions Presenter: Brad Brensing Company: Garmin

FROM EAA HEADQUARTERS HOMEBUILDERS WEEK CONTINUED

7 p.m. - 8:15 p.m.

[Engine Selection Basics](#)

Presenter: Dan Horton
Company: Kitplanes



EXTRAORDINARY CUSTOM
 AIRCRAFT PAINT SCHEMES SINCE 1997
SCHEMEDESIGNERS.COM

THURSDAY, JANUARY 28, 2021

1 p.m. - 2:15 p.m.

[RANS Aircraft Kits](#)

Presenter: Randy Schlitter
Company: RANS Aircraft

2:30 p.m. - 3:45 p.m.

[Welding Basics](#)

Qualifies for FAA WINGS and AMT credit.
Presenter: Earl Luce and Charlie Becker
Company: LuceAir LLC and EAA

4 p.m. - 5:15 p.m.

[Sonex Aircraft](#)

Presenter: John Monnett
Company: Sonex Aircraft

5:30 p.m. - 6:45 p.m.

[Dynon & Advanced Flight Systems](#)

Presenter: Michael Schofield
Company: Dynon

7 p.m. - 8:15 p.m.

[Van's RV Aircraft Kits](#)

Presenter: Greg Hughes
Company: Van's Aircraft



**BUILD AN RV.
 IT WILL CHANGE
 YOUR LIFE.**
 FIND OUT HOW!

FRIDAY, JANUARY 29, 2021

1 p.m. - 2:15 p.m.

[Plans Built Aircraft: The Affordable Option](#)

Presenter: Tim Hoversten
Company: EAA

2:30 p.m. - 3:45 p.m.

[Working With Wood 101](#)

Qualifies for FAA WINGS and AMT credit.
Presenter: John Egan
Company: EAA

4 p.m. - 5:15 p.m.

[Liability of Selling Your Homebuilt](#)

Presenter: Pat Phillips
Company: Aviation Attorney

5:30 p.m. - 6:45 p.m.

[Considerations in Design and Application of the Perfect Paint Scheme](#)

Presenters: Craig Barnett and Ken Reese
Companies: Scheme Designers and KD Aviation

7 p.m. - 8:15 p.m.

[Condition Inspections](#)

Qualifies for FAA WINGS and AMT credit.
Presenter: Vic Syracuse
Company: Base Leg Aviation

FROM EAA HEADQUARTERS HOMEBUILDERS WEEK CONTINUED



SATURDAY, JANUARY 30, 2021

1 p.m. - 2:15 p.m.	<p><u>FAA Certification Basics</u> <i>Qualifies for FAA WINGS credit.</i> Presenter: Dave Prizio Company: E-AB DAR</p>
2:30 p.m. - 3:45 p.m.	<p><u>Fabric Covering Basics</u> <i>Qualifies for FAA WINGS and AMT credit.</i> Presenter: Mark Forss Company: EAA SportAir Workshops</p>
4 p.m. - 5:15 p.m.	<p><u>Flight Testing Basics</u> <i>Qualifies for FAA WINGS credit.</i> Presenter: Gary Baker Company: EAA Flight Advisor</p>
5:30 p.m. - 6:45 p.m.	<p><u>Velocity Kit Aircraft</u> Presenter: Riley Swing Company: Velocity Aircraft</p>
7 p.m. - 8:15 p.m.	<p><u>Engine Break In</u> <i>Qualifies for FAA WINGS and AMT credit.</i> Presenter: Mike Busch Company: Savvy Maintenance</p>

this could be our chapter next year. Would you volunteer to help youth activities?



2021

E.A.A. Leroy Castle Chapter 538

Membership Renewal Form

Name: _____ Spouse's Name: _____

Address: _____

City: _____ State: _____ Zip: _____

Phone: _____ (circle one) Home Cell Email Address: _____

National EAA Number: _____ **Expires:** _____

Approximate Month & Year joined Chapter 538: _____

Note: EAA requires you be a member of National EAA in order to be a member of Chapter 538.

RATINGS HELD:

Student Pilot _____ Sport Pilot _____ Recreational Pilot _____ Private Pilot _____ Commercial Pilot _____

ATP _____ A&P _____ IA _____ CFI _____ CFII _____ Other Ratings: _____

Aircraft, Project or Hobbies: _____

DO NOT SHARE STATEMENT: We will ONLY SHARE THIS INFORMATION WITH OTHER CHAPTER MEMBERS,

Unless you tell us otherwise: **DO NOT** share this information

Signature

PROXY STATEMENT: I hereby appoint _____ of EAA Chapter 538 as my true and lawful agent and proxy with full power of substitution to represent me, in my absence, at any Chapter meeting on all matters coming before the meeting. Note: If you do not wish to appoint a proxy, mark "N/A", do not sign and you will not relinquish your vote.

Signature Date

INSTRUCTIONS: Return the **completed / updated** form and **\$20** annual dues to Treasurer:

John Gregg Jr.

5688 W. Abraham Ln. (Make checks payable to EAA Chapter 538)

Glendale, AZ 85308

Questions. Cell: 623-340-0383

Email: jgregg.jr@gmail.com

2021

E.A.A. Chapter 538

New Membership Form

Name: _____ Spouse's Name: _____

Address: _____

City: _____ State: _____ Zip: _____

Phone: _____ Email Address: _____

National EAA Number: _____ Expires: _____

Note: EAA requires you be a member of National EAA in order to be a member of Chapter 538.

Note: Dues are not pro-rated. Dues are due January 1st of each year.

RATINGS HELD:

Student Pilot _____ Sport Pilot _____ Recreational Pilot _____ Private Pilot _____ Commercial Pilot _____

ATP _____ A&P _____ IA _____ CFI _____ CFII _____ Other Ratings: _____

Aircraft, Project or Hobbies: _____

DO NOT SHARE STATEMENT: We will ONLY SHARE THIS INFORMATION WITH OTHER CHAPTER MEMBERS, unless you tell us otherwise: DO NOT share this information _____ Signature

PROXY STATEMENT: I hereby appoint _____ of EAA Chapter 538 as my true and lawful agent and proxy with full power of substitution to represent me, in my absence, at any Chapter meeting on all matters coming before the meeting. Note: If you do not wish to appoint a proxy, mark "N/A", do not sign and you will not relinquish your vote.

Signature Date

INSTRUCTIONS: Return the completed / updated form and \$20 annual dues to Treasurer:

John Gregg Jr.

5688 W. Abraham Ln. (Make checks payable to EAA Chapter 538)

Glendale, AZ 85308

Questions: Cell: 623-340-0383 Email: jgregg.jr@gmail.com

NAME TAG ORDER:

Style #1

Style #2

NAME
EAA CHAPTER 538
PHOENIX, AZ

NAME
EAA CHAPTER 538, PHX,AZ
LINE 3

EAA CHAPTER 538 **FUNDRAISER**

Donate now to help the chapter build a new home. Do you like to participate in Young Eagles Flights? How about pancake breakfast fundraiser's? Fly-in or fly-outs. Maybe you wish to move your project out of your garage into a bigger space. Do you like EAA workshops? Your contribution will help toward building a hangar facility that will be the new meeting place plus a home base for all of our activities. EAA Chapter 538 is a 501(c)3 nonprofit organization. Use the receipt below along with your donation.

Name _____
Address _____
City _____ State ____ Zip Code _____
Donation Amount _____

Print this page, fill it out and send it to

John Gregg Jr.
5688 W. Abraham Lane
Glendale, AZ 85308