



RUNWAY 35



Serving San Antonio Aviation Aficionados with all the Aviation News that's fit for print.

January 2006
Volume 48 Issue 1
On the Web:
WWW.EAA35.ORG

Inside this Issue:

CHRISTMAS PARTY	1
CANADIAN ADVENTURE	8
CONTACT LIST	13
CALENDAR	14
WANTED & FOR SALE	15
DIRECTIONS TO SAN GERONIMO	16
PHOTOS CONTRIBUTED BY: N WARNER, B. CABE, L. McIRVIN	

**BOARD MEETING @4:00
ALL MEMMBERS INVITED**

What a Party!

By Norris Warner

Eighty lucky members gathered for the annual Chapter 35 Christmas banquet on December 10th. The clubhouse had been gaily decorated by the ever-loyal Masons and McCarleys, Shirley Baker and Roxanne & Danny Beavers. The social hour, complete with Shirley Baker's famous punch and Al Almond's "wine cellar" supplies were warmly welcomed.



The dinner was catered by Renee Forrester-Day, Betty Day's daughter-in-law, and was scrumptious by anybody's standards.

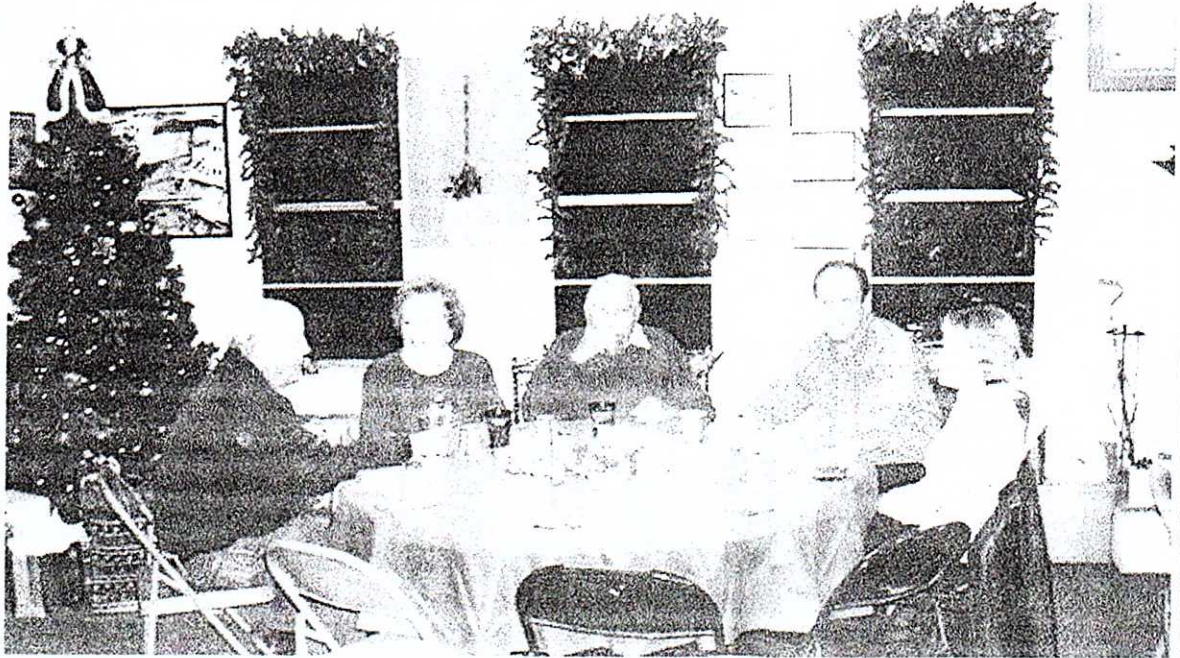
The tables were attractively set in the holiday theme, and after the main course, desserts of all kinds were offered. Yummy!

After the dinner hour, outgoing president Steve Carlson made many significant awards to the best of our many volunteers. New president Roch LaRocca, gave the chapter some insight into his views of the direction we need to take. Looks like we are once again blessed with

PARTY, CONTINUED

fine leadership!

Next on the agenda was our riotous gift exchange, keyed this year by Santa (John Latour) and Chief Elf (Jillian Carlson). Several of the most ought after gifts changed hands many times. Seems like wooden bi-planes were making the circuit constantly!



Our new president, Roch LaRocca has called a board meeting for 4:00 PM before our January meeting on January 14th. As always, all members are encouraged to attend. If you'd like to have our same caterer back for the next Christmas banquet, be certain to sit in and speak up. Roch will be designating a new Board of Directors, and setting our calendar for 2006, as well. These business meetings

are only held a few times a year, and they are very important for the health of your chapter. Plan to attend!

