



EAA Chapter 289

E-mail; EAA289@gmail.com

Mailing Address: EAA Chapter 289

PO Box 89105, Sioux Falls, SD 57109

Y14 location 47014 Great Planes Place, Tea, SD 57064

Chartered July 12, 1967



The Leader In Recreational Aviation

October 2022

## Chapter 289 Newsletter Around the Patch

Flag hanging in Bruce Beecroft Hangar.



### Around the Patch and now on Final

**Greetings 289ers.** Our NEXT PANCAKE BREAKFAST on Saturday October 15, 2022 is also our last get together this year. WOW we've been through so much together this year and we're gonna TRY to order a beautiful MILD FALL MORNING to make this our BEST EVENT THIS YEAR. REMIND everybody please our THIRD SATURDAY is happening in the middle of October.

Our directors have voted to join with the SD PILOTS ASSOCIATION, and maybe others to find a way to create a memorial display of some kind to install at our FSD AIRPORT TERMINAL which will HONOR NELLIE WILLHITE 1892-1991. She was the first deaf woman to earn a pilot's license, AND SD's first female PILOT. WE want her story out in PUBLIC to perhaps INSPIRE another generation of intrepid AVIATORS. IF YOU HAVE ideas, suggestions, or want to make any extra contributions to THIS EFFORT, let me know!

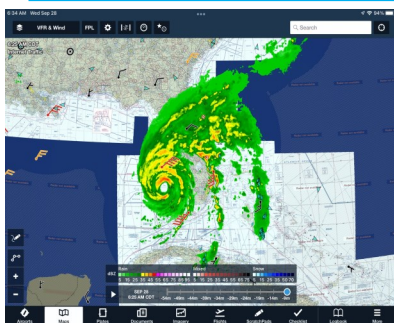
Hope to see y'all soon for the best PANCAKE FEED EVER. BRUCE B.

### Pictures or Information (articles)

EAA Chapter 289 would like pictures of members past or present projects or other information. These pictures will be displayed at Chapter building or posted on Chapter Website or published in Chapter Newsletter. This way we can showcase what the Chapter is all about. Please include a short story about the project.

E-mail to [pethau@sio.midco.net](mailto:pethau@sio.midco.net)

Or send to EAA 289, PO Box 89105, Sioux Falls, SD 57109



**Left: Hurricane IAN was Big & Serious Yikes**

Something tells me that a roadrunner and a coyote were somehow involved



EAA Chapter 289, Lincoln County Airport, & Chapter Hangar Below Tea, SD



Concordes in photo opportunity formation. Reportedly only happened ONCE !!!



Rare BELL P63 Kingcobra



We want to sell as many ads as we can! Here's our pricing:

1/2 page, single issue	\$60.00
1/4 page, single issue	\$30.00
2" x 4" or 1" x 8", single issue	\$15.00
1" x 4", single issue	\$ 7.50

Any Member Ad for sale, for trade, etc. will run one or more issues for free ... and it does not need to relate to aviation! This is a member benefit—please use it ... 1 x 4 size.



**FIRST CLASS**  
**DENTAL CARE**

Dr. Zachary Beecroft, DDS  
605-271-9330  
www.firstclassdentalcare.com  
6703 S. Louise Ave, Sioux Falls, SD 57108 (Just south of Lewis Drug)

## Advertising

- Call on your suppliers, insurance carriers, usual shopping store, etc.
- Inform them of prices
- Get Ad info information
- Collect ad price
- Turn into Editor

We want to sell \_\_\_\_\_

We want to trade \_\_\_\_\_

We'll give away \_\_\_\_\_



Powered Parachute at Y-14

**PLEASE NOTE:**

**Our Chapter accepts donations of old batteries for recycling as a fund raising activity. You can drop them off on the 'castered pallet' in the Southwest corner of our hangar. Please help us out!**



"Making Everyday Special"  
1006 W. 5th St., Canton SD 57013  
605-987-4420.

289 Facebook Link: <https://www.facebook.com/ea289/>  
289 Website link: <https://chapters.eaa.org/ea289>  
CAP Lobos Facebook: <https://www.facebook.com/lincolncap/>



**Batteries + Bulbs WE FIX IT** 605/362-1050

## September 17, 2022 Lincoln County Airport Fly-in Breakfast

Day started out cloudy. It turned sunny with blue sky late morning with windy conditions. There were couple fly-in pilots along with usual drive-in crowd.



*Left:* Crowd.  
*Right:* Plane  
Taking off Y14



*Left & Right:*  
Planes Taking  
off Y14



### Electric Aircraft

For the first time in the U.S., a student pilot has earned a private pilot certificate using an electric aircraft.

Shane Fisher flew his check ride in a Pipistrel Velis Electro on March 6 at Right Rudder Aviation's flight school at Florida's Inverness Airport (KINF). The two-seat trainer is the world's first electric-powered airplane to receive a type certificate. It was certificated by EASA in 2020, but in the U.S., it operates under light sport experimental aircraft rules.

"This is a fantastic accomplishment for both Shane and the aviation industry as a whole, as this major milestone demonstrates the exciting possibilities and reality of electric aircraft in the training market here in the U.S.," Right Rudder said in a statement released Friday.

#### About the Aircraft

The Velis Electro—a single-powerplant aircraft aimed at the pilot training market—has an empty weight (with batteries) of 941 pounds (428 kg) and an maximum takeoff weight (MTOW) of 1,320 pounds (600 kg). Payload: 378 pounds (172 kg). Its maximum speed is 98 kcas.

Further information at:

<https://www.flyingmag.com/u-s-aviation-first-private-pilot-certificate-earned-in-electric-airplane/>



Further information at:

<https://www.flyingmag.com/u-s-aviation-first-private-pilot-certificate-earned-in-electric-airplane/>

Click or Copy-Paste-Click

Safety Tip

**CLEAN TO FLY**

By Bruce Beecroft

FALL is upon us and while SNOW is not yet in our forecast. FROST certainly IS. FROST is a thin layer of ice which forms on a solid surface when water vapor in an above freezing atmosphere comes in contact with a cold, below freezing surface. The water vapor changes phase from vapor into ICE on the surface! BEWARE, this can be microscopic and nearly invisible! Your PREFLIGHT in these conditions should include TOUCHING hands can feel the ice even when it's hard to see. NO AMOUNT of FROST is acceptable. FROST destroys LIFT. YOU NEED LIFT TO FLY!!! CLEAN IT OFF!

Virtually ALL of SOUTH DAKOTA is under FROST WARNINGS ALREADY.

**Dover Air Force Base** is located in the "First State" at the center of the Delmarva - Delaware, Maryland and Virginia - Peninsula. Dover AFB is home to the Department of Defense's largest aerial port and approximately 11,000 Airmen and joint service members, civilians and families. Its personnel are responsible for global airlift aboard assigned C-5M Super Galaxy and C-17 Globemaster III aircraft. Additionally, the 436th Airlift Wing hosts key partners, such as the Air Force Reserve's 512th Airlift Wing, Air Force Mortuary Affairs Operations (AFMAO), the Armed Forces Medical Examiner System (AFMES) and the Joint Personal Effects Depot (JPED), jointly responsible for the dignified return of fallen American service members.

The **C-5M Super Galaxy** is a strategic transport aircraft and is the largest aircraft in the U.S.



Air Force inventory. Its primary mission is to transport cargo and personnel for the Department of Defense. The C-5M is a modernized version of the legacy C-5 designed and manufactured by Lockheed Martin. Currently, Dover Air Force base operates 18 C-5M aircraft. Due to the nose and aft cargo doors, ground crews can simultaneously load and offload cargo from both ends, reducing transfer times. The full-width drive-on ramps at each end enable double rows of vehicles to be transported.

Further Information at: <https://www.dover.af.mil/About-Us/>

Further Information at: <https://www.dover.af.mil/About-Us/>

Click or Copy-paste-click

## AirVenture 2022

**Left:** B-29 Doc

**Right:** Fireworks



Chapter 289 received a \$100 donation to our Young Eagle program from **Albert J. Moore—Flandreau, SD Chapter 289 member** who passed away in June.

## Lincoln County Civil Air Patrol "Lobos"

Lincoln County Composite Squadron activities.



Lincoln County Composite Squadron received the Squadron Aerospace Education Achievement Award for Commendable AE Programs Performance. The National CAP award was presented to the squadron by SD Wing Commander, Col. Michael Marek (right). Accepting the award (L to R) are Squadron Commander, Capt. Denise Clement and Aerospace Education Officers; 2d Lt Ron Rysavy, 1<sup>st</sup> Lt Kyle Clement and Capt. Brad Lofland.



Part of Cadet Programs curriculum is Physical Education and Training. Cadets are tested quarterly in the mile run, push-ups, curl-ups and sit & reach followed by PT activities. One of their favorite activities is tug-o-war.



sUAS (small Unmanned Aerial System) or better known as drones are used to aid in Search and Rescue. Several CAP members are training to be pilots and technicians. These sUAS's can be utilized during the day and night with their photo and inferred capabilities.



C/SrA Fred Dennis was the recipient of the Air & Space Forces Association Outstanding CAP Squadron Cadet Award. This is in recognition of outstanding achievement in leadership and academic standing at Lincoln County Composite Squadron. Presenting the award from the AFA is Chapter 229 President, Retired Col. Chip Deyerle (left) and Squadron Commander, Capt. Denise Clement (right).

EAA Chapter 289  
47014 Great Planes Place  
Lincoln County Airport  
Tea, SD 57064

TO:

Mailing Address:  
PO Box 89105  
Sioux Falls, SD 57109



Crowd 9-17-2022

### Newsletter send by E-mail

If you want to get Newsletter by E-mail to help us save on some printing and postage cost. Please e-mail chapter at [pethau@sio.mkidco.net](mailto:pethau@sio.mkidco.net) with your name & e-mail address.



EAA 289 Pancake Breakfast &  
Board of Directors meeting 8 am  
**October 15, 2022**  
**No Breakfasts until Spring 2023**

Membership Dues  
In EAA 289  
\$25.00/yr  
Life Member  
\$250



Plane Taking off 9-18-22