



THE SPIRIT OF AVIATION

Chapter 1612

November 2023

Newsletter

Volume 5 - Issue 11



Inside this issue:

From the Front Seat	2
Meeting Location	3
What If Drill	3
VMC Scenario	3
What is it?	4
Chapter Merch & Tools	4
Coming Events	5
OKAAA Fly-in	6
Open Hangar Day	7
Meeting Minutes	8
Chapter Leadership	9
Chapter Application	10





EAA Chapter 1612 Newsletter



DAVID J. PERRY AIRPORT (1K4) GOLDSBY, OK

From the Front Seat—President Eric Muehlberg

Although rain and soft ground shut things down at last year's Oklahoma AAA Fly-In and Car Show, that certainly wasn't the case this year. Near perfect fall weather made for a well attended event this year. From my count there were near 100 classic cars and trucks displayed in the auto corral. As aircraft came and departed during the morning, I would estimate over 50 aircraft attended as well. Many of those aircraft were owned and flown by our chapter members. I may have missed one or two, but photos of our members and their aircraft are included elsewhere in the newsletter. As far as the autos go, Jim and Darlene Bynum brought their 1954 Red Chevy for display. They said it was the first time they had actually driven to the Pauls Valley airport. It was a great event and if you missed it I highly recommend you attend next year whether you fly or drive.

The Chapter Open Hangar day at Cole Airpark held on 21 October was attended by over 20 guests.

Things started at my hangar and then moved to Brian Rohr's hangar and on down the street to Steve Hubbert's hangar. Sandwiches, snacks and soft drinks were available to attendees and a lot of aviation centered conversation took place. In total, I believe there were 15 aircraft displayed between the 3 hangars that are either flying, under construction or under restoration. Everyone seemed to enjoy their visit and we hope to hold another open hangar visit at a different location in the near future.

Just for planning purposes, our December meeting will be the annual OKC Tri-Chapter Holiday dinner on 2 Dec at 4:30 pm and held again at the Twin Lakes airport. This is a family event so bring the spouse and kids or someone who might be interested in learning more about EAA and aviation in general. As in the past, it will be held at Garry and Karen Manning's hangar. The Manning's address is 13801 Chandelle Drive, Newalla, OK 73857. This is a fly-in or drive-in event, and everyone is asked

to bring a side dish or dessert to share. The chapters will provide the meat, drinks and everything else. No one ever leaves this gathering hungry! For more information about this event, contact Gary Manning at 405-664-7356.

Our next regular chapter meeting will be this Saturday 11 November at 10:00 am at the David J. Perry Airport (1K4) terminal building. We will try to fly a few Young Eagles before the meeting weather permitting. We'll also have the usually VMC question and discussion, the "what is it" challenge, this month's EAA Chapter Video, and a presentation or two that I'm sure you'll find interesting. We will also make sure there's hot coffee and donuts on hand before the meeting. The weather forecast doesn't look too bad, so come out and enjoy a bit of aviation centered conversation. Hope to see many of you this Saturday.

Tailwinds,

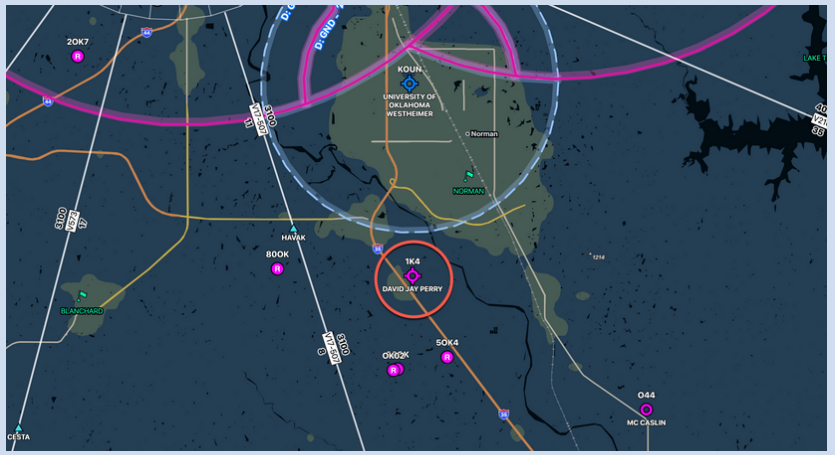
Eric Muehlberg



Meeting Location

David J. Perry Airport (1K4) Goldsby, OK

This month's meeting is at the David J. Perry Terminal building (1K4) on 11 November 2023 from 1000-1130. The Chapter will supply donuts and coffee. If you have questions contact Eric Muehlberg at 405-923-6749 or smuehlberg@pdi.net.



What If Drill...A Super Cootie?

In the September "What is it?" section of the newsletter I highlighted the WACO aircraft Cootie, a simple single-place wood aircraft powered by a 28 HP Lawrence engine. The Cootie I had a landing accident and remnants were converted to the Cootie II biplane--thus little is known about the Cootie flying characteristics or the original. However, recently a full-size replica was built by Brian Meyers of Troy OH, and he states the aircraft flew very well behind the limited power Lawrence engine--yes, he used a Lawrence. This got me thinking, could I build a full-size replica of the cootie powered by a 1600 CC VW with belt drive?

I imagine the construction of the Super Cootie to be of aluminum tubing riveted using blind rivets and aluminum gussets like the process use by Graham Lee and Robert Baslee for his Aerodrome WW I replicas. Like the fuselage, the wings can be built very quickly. The wing ribs are constructed from 1/4" aluminum tubing bent around a simple plywood jib to form the airfoil shape and then blind riveted using aluminum sheeting to form a finished assembly. The wings would use tubular aluminum leading and trailing edge spars of slightly different diameters and aligned using wire cable bracing. The fuselage would be covered with thin aluminum sheeting to aft of the cockpit area and then fabric to the tail. The covering material would be uncertified Dacron fabric and the finish would be latex house paint as described in Sport Aviation. I believe the aircraft would cost a little north of \$10K depending on your scrounging skills.

What of performance? My estimates are the empty weight would be around 300 pounds with a maximum gross weight of 600 pounds which would allow 13 gallons of gas

and a 220-pound pilot. By using a Clark Y airfoil and the 1600 cc VW engine, cruise speed would be 55-65 MPH with a top speed of 65 MPH. Stall speed would be about 30-35 MPH. Ok, so this may be too slow for most of you, but what a fun flyer for the summer.

Let me know what you think by sending me an email at EAA48@aol.com or sending a text to me at 813-3347309. I am sure Eric will be interested in your thoughts too.

Until then, keep 'em flying.

Dennis D'Angelo



VMC Question(s) of the Month

You are preparing for a day VMC flight from C. E. Page Airport to Ponca City Regional Airport in your Cessna 150 to attend the monthly Ponca City Fly-in breakfast. Your flight plan for the 82NM flight at 5,500 MSL with temperatures at altitude of 20 degrees F. You left your aircraft outside, and it is frost covered when you arrive for the flight. You properly clear the frost and begin the flight. As you climb you notice your climb speed seems to be decreasing with altitude based on the standard power setting for your cruise altitude. What could be the issue and what should you do about it?

What is it?

October 2023 Aircraft

The Emigh A-2 Trojan had side-by-side seating in an enclosed cabin for a pilot and passenger. Of all metal construction it had a fixed tricycle landing gear and was powered by a Continental A90 flat-four piston engine. Many major components of the aircraft were designed to be interchangeable to simplify and lower manufacturing costs. The vertical and horizontal stabilizers were interchangeable as well as the rudder and elevators. A symmetrical section of the wing was interchangeable and the upper and lower fuselage skins were also identical. A total of 58 Trojans had been completed when production ceased in 1950.

General characteristics

Crew: 2
Length: 20 ft 5 in (6.22 m)
Wingspan: 31 ft 7 in (9.63 m)
Height: 6 ft 5 in (1.96 m)
Wing area: 156.8 sq ft (14.57 m²)
Powerplant: 1 × Continental C90, 90 hp
Propellers: 2-bladed

Performance

Maximum speed: 130 mph (210 km/h, 110 kn)
Cruise speed: 115 mph (185 km/h, 100 kn)
Range: 500 mi (800 km, 430 nmi)
Service ceiling: 13,000 ft (4,000 m)



Chapter Merch

Chapter 1612 T-shirts are now available in your choice of color and size. The t-shirt will have the small Chapter 1612 logo on the front left, and you may add one line of text under the logo. The back of the shirt will have a large chapter logo. Order forms will be available at the next meeting. Price is \$20.00



Tool Crib

Visit the Chapter 1612 website (chapters.eaa.org/ea1612) to see the current list of tools in our tool crib and checkout policy



SCAN ME



Chapter Socks Coming Soon. We will be selling socks with the Chapter 1612 logo on them in the near future. The price will be reasonable. Be the first with your Chapter 1612 socks.

Coming Events

November

3-4 Nov 2023 – Lonestar STOL - Sulphur Springs (KSLR)
4 Nov 2023 - OAAA Fly-in and Car Show - Pauls Valley (KPVJ)
11 Nov 2023 - Fairview, OK Fly-in - Fairview Municipal Airport (6K4)
18 Oct 2023 - Coffee & Donuts Fly-in - McKinney, TX (KTKI)

December

2 Dec 2023 @ 4:30PM - OKC Tri-Chapter Holiday Dinner (Fly or Drive)
Garry & Karen Manning's Hangar @ Twin Lakes Airport (20K2)
13801 Chandelle Drive, Newalla, OK 73857
Bring a side or dessert

January

6 Jan 2023 - Ponca City Fly-in - Ponca City Regional Airport (KPCN)

Webinars

EAA Webinars

These live multimedia presentations are informative and interactive, allowing the presenter to use slides and audio, while audience members can ask questions and be polled for their opinion.

System Requirements for Attendees

You can easily attend a session from anywhere, anytime, using a compatible computer or mobile device! To get the most out of GoToWebinar, you can download and install the full-feature desktop software on your Windows and Mac computer.

See Download GoToWebinar for your download options. You can also check your system's compatibility automatically.

Some EAA Webinars qualify for credit in the FAA's WINGS or AMT awards program. Visit www.faasafety.gov for details.

FAASTeam Webinars

The FAASTeam sponsors thousands of aviation safety seminars and webinars throughout the country each year. These interesting and informative seminars and webinars include a variety of important safety topics designed to reduce risk and increase the level of safety in aviation operations.

You can find these webinars at <https://www.faasafety.gov/spans/events/eventlist.aspx>

Visit rb.gy/352l9

or scan the QR code below for a list of available webinars



Chapter Pictures

OKAAA Fly-in



Check the chapter website for more pictures and information

1612.eeachapter.org



Chapter Pictures

Open Hangar Day



Check the chapter website for more pictures and information

1612.eeachapter.org



Chapter 1612

Meeting Minutes

14 October 2023



- 1000 meeting called to order by President Eric Muehlberg
- Attendance: 40 members
- What If Drill - Stewart 265
- VMC Question of the Month: What steps do you take to avoid wake turbulence from the heavy jet landing ahead of you?
- What is it? Emigh A-2 Trojan
- Dec 2 2023 - Club Christmas Party @ Gary Manning's home
- Chapter 1098 at Girls in Aviation Day was highlighted. Four chapter aircraft were represented.
- EAA Chapter Video Presentation
- Eric talked about and showed old Sport Aviation Magazines and the information contained inside them.
- 1135 meeting adjourned



Who is EAA and Chapter 1612?



We are the Experimental Aircraft Association (EAA) a growing and diverse organization of members with a wide range of aviation interests and backgrounds and a mission of growing participation in aviation to include antiques, classics, warbirds, aerobatic aircraft, ultralights, helicopters, and contemporary manufactured aircraft.

EAA and Chapter 1612 enables you to share the spirit of aviation with the most passionate community of recreational pilots, builders, and restorers. We are an association that offers the fun and camaraderie of participating in the flying, building, and restoring of recreational aircraft with the most passionate community of aviation enthusiasts. Come join us today!

President
Eric Muehlberg
405-923-6749
smuehlberg@pldi.net

Visit the chapter website at
1612.eaachapter.org

Chapter Leadership & Contacts

President

Eric Muehlberg
405-923-6749
smuehlberg@pldi.net

Vice President

Frank Lucky Macy
484-326-1465
luckymacy@hotmail.com

Treasurer

Columbus Nobles
405-517-8202
Cnobles@reagan.com

Secretary

Brian Stenseth
623-388-7651
LC130@hotmail.com

Technical Counselor

Eric Muehlberg
405-923-6749
smuehlberg@pldi.net

Website Editor

Nicholas Rutledge
405-205-9002
nicholas.p.rutledge@gmail.com

Flight Advisor

Mitch Williams
405-574-6842
mitchw1962@gmail.com

Eagle Flight Leader

Jim Thomas
405-250-5397
buster40511@gmail.com

Young Eagle Coord.

Robert & Christy Self
580-799-2572
robert.self@ymail.com

Young Eagle Coord.

Victoria Stevens
TBD
victoryintruth@protonmail.com

Chapter Membership Coord.

Tim Muehlberg
817-705-6560
eaa.chapter.1612.ok@gmail.com

Newsletter

Olan Hodges
214-585-2561
olanhodges@gmail.com





EAA CHAPTER 1612 MEMBERSHIP FORM



Name: _____

Phone: _____

EAA Member#: _____

E-mail: _____

Address: _____

Date: _____

What are your aviation interests / goals?

Are you a pilot? If so, what rating do you hold?

Do you hold a maintenance rating? If so, what rating do you hold? _____

Have you built / restored or are you building / restoring an aircraft? If yes, what type(s)? _____

Are you contemplating building or restoring an aircraft? If yes, what type(s) interest you the most? _____

Do you own or have you owned an aircraft? If yes, what type(s)? _____

What type of presentations would you like to see at future meetings? _____

Chapter Meetings are the 2nd Saturday
Chapter dues are \$20

Chapter mailing address is:
EAA Chapter 1612 Chapter President - Eric Muehlberg
954 Redbud Lane 405-923-6749
Newcastle, OK 73065