

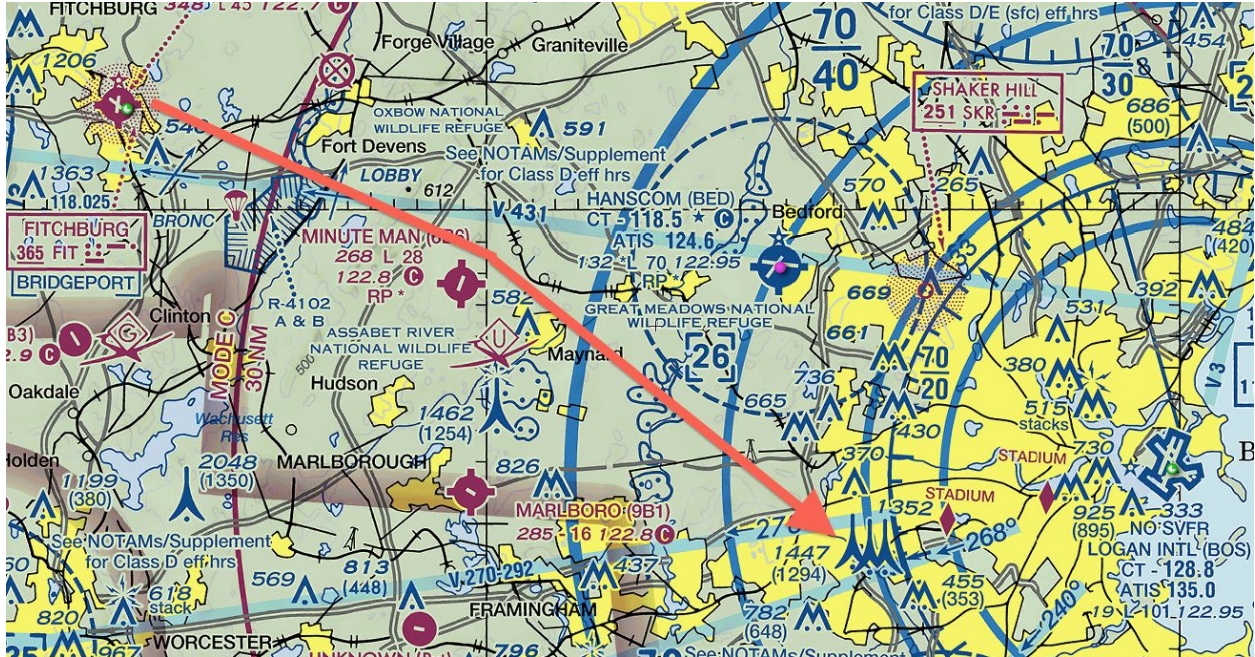
# Boston City Tour - How To Do It



By Dave Dion

## **Here's how I've flown the Boston City Tour many times:**

> Depart FIT and VFR navigate toward Stow Airport at 3,000 MSL. Continue your VFR navigation to the Needham Towers (three very tall towers just South of the Mass Pike and I-95 / Rte 128 intersection; the towers are ~1300 feet AGL); see sectional below - arrow points to the Needham Towers. Descend to 2,500 MSL approaching the Needham Towers as the bottom of Boston Class B is 3,000 in that area.



> Contact Boston on 124.4; use Stow for positional location (e.g., 5 miles Southeast of Stow); or put Bedford or Boston in the GPS for a position off those locations. You'll get a squawk and Boston will ask for your intentions. Say **"I'd like to do the City Tour today if possible"**. Boston will coordinate your entry into Class B with Logan Tower or Boston Skyway (the helicopter controller). If there's a delay, start a 360 just to the West of the Needham Towers (remember - to the West of the towers, the bottom of Class B is 3,000; to the East of the towers, the bottom of Class B is 2,000).

> Boston will direct you to Tower (or Skyway) for clearance in. Upon check in - say **"Boston Tower, Aircraft 123 VFR at 2,500 at the Needham Towers"**. Here's what you will get back: **"Aircraft 123 you are cleared into Class B at or below 2,000"**. Sometimes you will be issued a "qualifier" (e.g., "Stay at or above 1,500" or "Stay South of the Charlestown Bridge" or "Stay West of the Boston Inner Harbor"). **REPEAT BACK your Class B clearance !!!**

> Proceed inbound. Here's what I like to do:

- Descend to 1,500 (if OK) and fly North of the Charles River aiming for the Harvard football stadium (see picture).



- Keep heading toward Cambridge / Somerville (MIT area; North of the Charles River) then a right hand turn at the Bunker Hill Monument to South; down Boston “Inner” Harbor (see picture below - it shows the Coast Guard Station, North End “Little Italy”, & Financial District). Logan will be on your left.



- Take a right hand turn around the Financial District to West (see picture below).



- Heading West - say hello to the John Hancock and Prudential Buildings.



- Next - do your very own Fenway Park flyby (Go BoSox !!!).



- Then continue West down the Mass Pike departing Boston to the West.
  - Tower will ask you if you are departing Class B Airspace (they are watching ;- ) and they will hand you off to Boston Approach or you may return VFR to FIT.

Notes:

- a. Keep 2,000 feet laterally from tall buildings
- b. I've done the City Tour from the North Shore (entry from Salem)
- c. Ask for another "circuit" if possible (it's hard to take it all in on one pass; especially for your passengers); if one circuit was enough for you too ... there's always the next time
- d. Thank Tower on the way out ("very awesome Tower !!!")