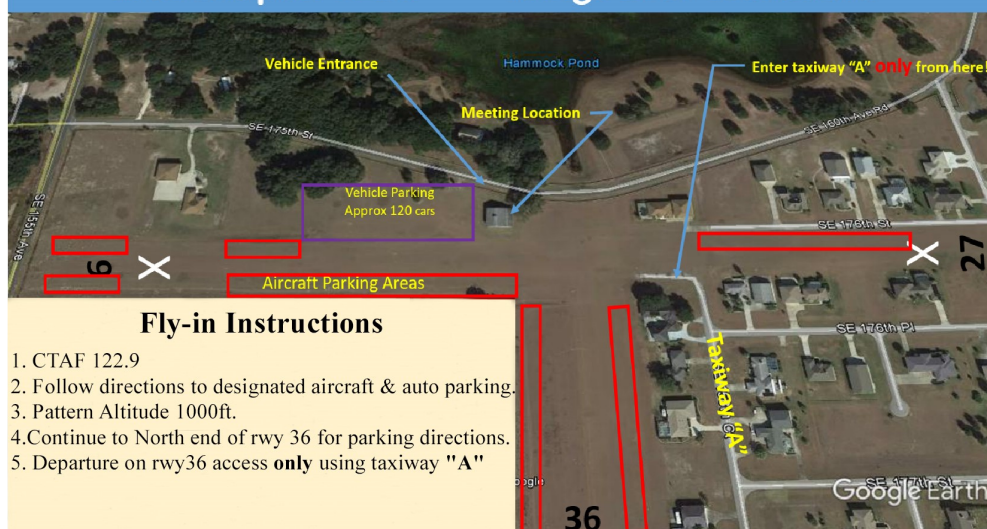


FLY-IN DIRECTIONS

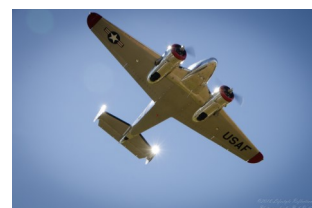
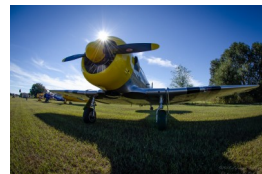
Love's Landing's identifier is "97FL". For this event: The east-west runway (9-27) will be closed. The preferred runway is 36 with a left hand pattern. Listen for parking guidance from the ground on CTAF 122.9. After landing, taxi to the end of runway 36 and follow the ground guide's instructions. Departure will be with ground guide instructions **only**.

EAA Chapter 1236 "Wings over Weirsdale"



Fly-in Instructions

1. CTAF 122.9
2. Follow directions to designated aircraft & auto parking.
3. Pattern Altitude 1000ft.
4. Continue to North end of rwy 36 for parking directions.
5. Departure on rwy 36 access **only** using taxiway "A"



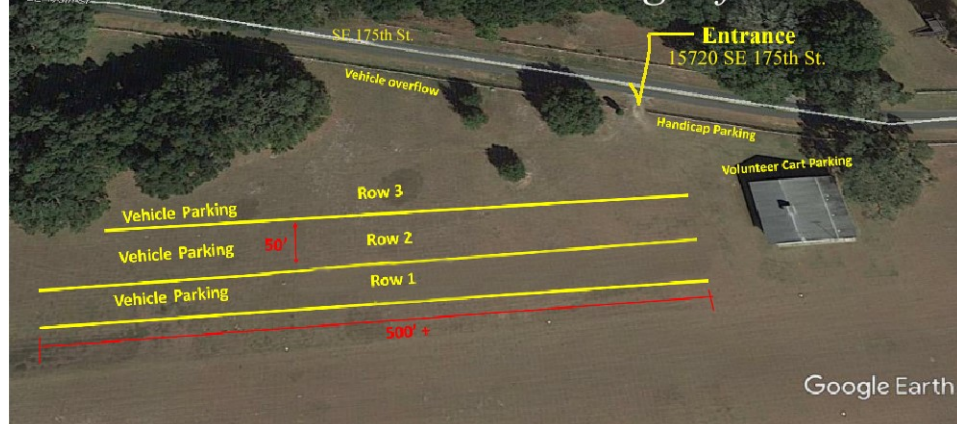
EAA Chapter 1236 "Wings over Weirsdale"



DRIVE-IN DIRECTIONS

EAA Chapter 1236 "Wings over Weirsdale"

Drive-in Entrance and Parking Information



From Weirsdale: Travel south on CR 25 to 175th St. Turn left on SE175th St and continue to the stop sign. Continue going straight for approximately 1/4 mile the entrance will be on the right just before the white hanger. (Address: 15720 SE 175th Street, Weirsdale, FL 32195)

From Lady Lake: At the intersection of US HWY 27/441 and Griffin Ave turn east on Griffin Ave. Continue to the stop light at the intersection of Griffin and CR 25. Turn left onto CR 25 and travel north to SE175th St. Turn right onto SE175th Street and continue to the stop sign. Continue going straight for approximately 1/4 mile, the entrance will be on the right just before the white hanger. (Address: 15720 SE 175th Street, Weirsdale, FL 32195)