
JUST PLANE NEWS . . .

EAA Chapter 1236 Newsletter November 2022

SAVE THE DATES

NOVEMBER 5TH (Saturday)
Annual Fly In

NO November CHAPTER MTG.

NOVEMBER 17th (Thursday)
IMC/VMC mtg; 7:00PM
Carlile's Pilots Lounge

DECEMBER 10TH (Saturday)
Chapter Mtg. 9:00 donuts/
coffee; 10:00 mtg; Carlile's
hangar 15720 SE 175th St.
Weirsdale

Chapter 1236 Officers

Pres. John Carlile
VP Bruce Cynamon
Treasurer Tricia Angell
Secretary Ana Kircher
Membership Janette Carlile

Supporting Board Members

Tech Support Don Bartlett
Young Eagles Judie Betz
Chap. Website Bob Rolfe
Newsletter Janette Carlile

KEEP IN TOUCH

EMAIL:

eaachapter1236@gmail.com

WEBSITE:

chapters.eaa.org/ea1236



October Mtg: It Was All About the Fly In

The November 5th Fly In Team Leaders shared their group's plans for the event and the need for volunteers at the October Chapter meeting.

Team leaders for this Fly In are: Tricia & Mike Angell - Food; Greg Ramola - Airplane Parking; John Leary - Car Parking; Don Bartlett - Signage; Bruce Cynamon - Set Up/ Take Down; Judie Betz - 50/50; Sharon Green & Barbara Putnam - Lunch Ticket Sales; Kathy Hirtz - Medical; Steve Wolf- Air Boss. Supporting all these teams are dozens of volunteers from our Chapter and Love's Landing community.

Heather Oak Farms (Maria & Bob Tracy) will be smoking the pork all night before the Fly In. Brad Winkler and his dynamite team from Battery Boys will be providing Golf Cart rides to and from the flight line. Signature Homes will be providing the much needed porta potties.





Our Love's Landing Pilot Volunteers

These pilots (also Chapter 1236 members) volunteered right away to give these Vietnam Vets a very memorable day of flying and friendship. Thanks to: Don Bartlett, Kevin Oliver, Bruce Cynamon, Mark Mercario, John Stahr, Mike Angell, Terri Hull, Steve Wolf, Kathy Hirtz, Ron Normark & Pete Putnam.



Kathy Hirtz and her Zlin...



Kevin Oliver (KO) and his Piper PA12 (Super Cruiser)

Pilots from Loves Landing Provide River Rat Rides

So...what's a River Rat? Originally known as the Red River Valley Fighter Pilots Association, this group is also known as the River Rats. This national organization was formed in 1967 with aircrews who flew over the Red River Valley in North Vietnam - considered the most heavily defended airspace in the history of aerial combat. After the Vietnam War, the group focused its attention toward generating awareness of the POW, MIA & KIA and in recent decades, scholarships for military families.

John Carlile, a charter member of River Rats, flew F-4 missions over Vietnam 1971-72. John is a member of the newly formed local River Rats chapter and invited these Vietnam vets for a special day of rides in private planes, beer at the pilots lounge bar, a bit of Liar's Dice play and comradely with the local pilot community.



Don Bartlett and his TriPacer...



Mark Mercario and his Stearman...

A Few more River Rats Memories...



Mike Angell and his Cessna 182 aka Skylane



Bruce Cynamon and his Super Petal...



Terri Hull and her RV 6....



...and Janette Carlile managed to snivel an Airplane Flewzee ride with John Stahr and his one of a kind RV 8.



After the Pilots tucked their airplanes back in their hangars, they returned to have a beer and great conversation with the River Rats.

Share Your Toys

Send a pic (preferably one with you in it as well) or two ³ of a new acquisition or completed project, or maybe project you are currently working on. Please give details that can be shared with others.

Send to: janette.g.carlile@gmail.com

WINGS OVER WEIRSDALE NOVEMBER 5, 2022

*EAA CHAPTER 1236, LOVE'S LANDING FLY-IN OR DRIVE-IN
LUNCH, PLANES ON DISPLAY, SHUTTLES, (RAIN DATE IS NOVEMBER 6, 2022)*

Please come and join us for our EAA Chapter 1236 Annual Fly-In at Love's Landing Aviation Community. Airplanes on display will include antiques, classics, and home-builds. The event starts with early arrivals at 9:00AM for coffee and donuts..

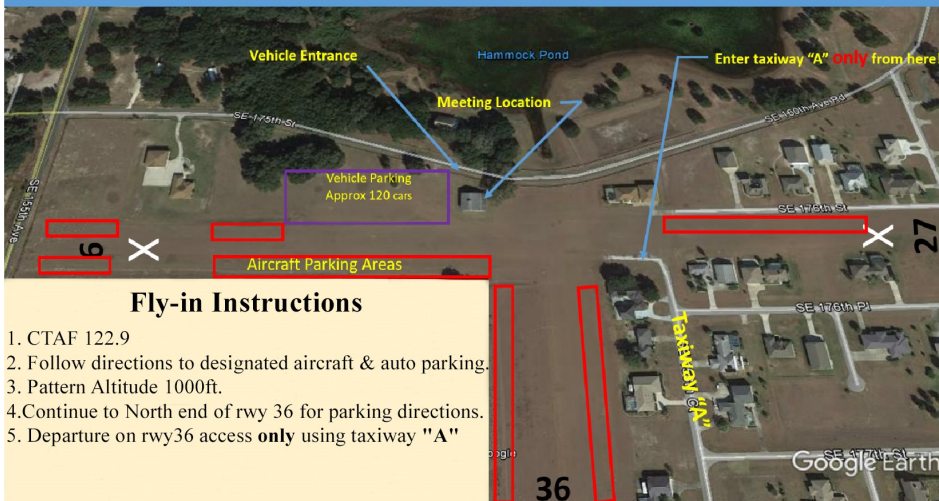
Lunch begins at 11:30 AM through 1:30 PM. There'll be lots of Pulled Pork to eat, (no Bun) beans, coleslaw, cornbread, homemade desserts and a drink included for \$15.00 per person. Purchase your Lunch tickets at the Ticket booth.



FLY-IN DIRECTIONS

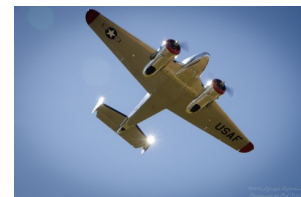
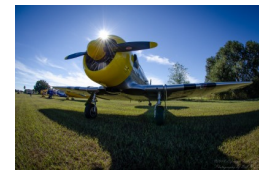
Love's Landing's identifier is "97FL". For this event: The east-west runway (9-27) will be closed. The preferred runway is 36 with a left hand pattern. Listen for parking guidance from the ground on CTAF 122.9. After landing, taxi to the end of runway 36 and follow the ground guide's instructions. Departure will be with ground guide instructions **only**.

EAA Chapter 1236 "Wings over Weirsdale"



Fly-in Instructions

1. CTAF 122.9
2. Follow directions to designated aircraft & auto parking.
3. Pattern Altitude 1000ft.
4. Continue to North end of rwy 36 for parking directions.
5. Departure on rwy 36 access **only** using taxiway "A"



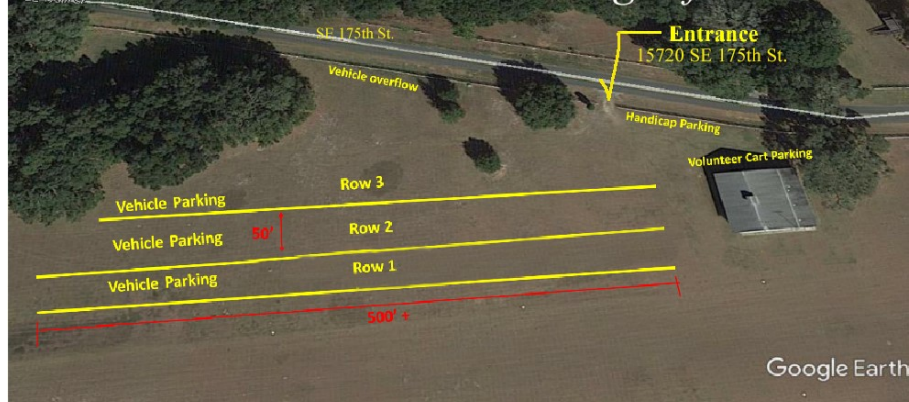
EAA Chapter 1236 "Wings over Weirsdale"



DRIVE-IN DIRECTIONS

EAA Chapter 1236 "Wings over Weirsdale"

Drive-in Entrance and Parking Information



From Weirsdale: Travel south on CR 25 to 175th St. Turn left on SE 175th St and continue to the stop sign. Continue going straight for approximately 1/4 mile the entrance will be on the right just before the white hanger. (Address: 15720 SE 175th Street, Weirsdale, FL 32195)

5

From Lady Lake: At the intersection of US HWY 27/441 and Griffin Ave turn east on Griffin Ave. Continue to the stop light at the intersection of Griffin and CR 25. Turn left onto CR 25 and travel north to SE 175th St. Turn right onto SE 175th Street and continue to the stop sign. Continue going straight for approximately 1/4 mile, the entrance will be on the right just before the white hanger. (Address: 15720 SE 175th Street, Weirsdale, FL 32195)